



SAFFRON WALDEN
COUNTY HIGH SCHOOL

SWCHS SIXTH FORM SUMMER WORK

English Language

TASK

English Language

If you have any queries regarding this work please email
pwilson@swchs.net

Task

1. Complete the Grammar Flowcharts below.
2. Buy an A4 sized scrapbook
3. Find three non-fiction texts such as advertisements, newspaper articles, etc. and annotate them with the language features that have been used and why.

How will this work be used in lessons?

You will need a secure knowledge of grammatical terms to write about the texts that you study in Year 12.

How long will this task take?

3 hours

GETTING READY FOR A-LEVEL ENGLISH LANGUAGE:

Noun

Definition:

Concrete noun

Definition:

e.g.

Abstract noun

Definition:

e.g.

Proper noun

Definition:

e.g.

Collective noun

Definition:

e.g.

Noun phrase

Definition:

e.g.

Verb

Definition:

Primary verbs:

-
-
-



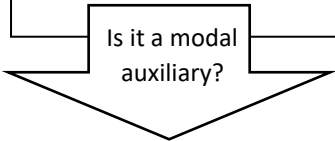
Main
Definition:

e.g.



Auxiliary
Definition:

e.g.



Dynamic
Definition:

e.g.

Stative
Definition:

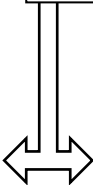
e.g.

Modal auxiliary
Definition:

e.g.

Epistemic
Definition:

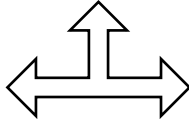
e.g.



Deontic
Definition:

e.g.

Verb (continued)



Regular

Definition:

e.g.

Irregular

Definition:

e.g.

Inflection

Definition:

e.g.

All irregular
verbs are
derived from
Old English

Copular verb

Definition:

e.g.

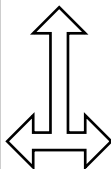


Complement

Definition:

e.g.

Voice



Active voice

Definition:

e.g.

Passive voice

Definition:

e.g.

Adverb

Adverb

Definition:

e.g.

Adverbs of:

-
-
-
-
-

Adverbial

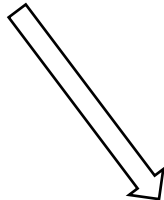
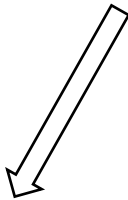
Definition:

e.g.

Discourse marker

Definition:

e.g.



Pre-modifier

Definition:

e.g.

Post-modifier

Definition:

e.g.

Intensifier

Definition:

e.g.

Grammatical words

Determiners

Definition:

e.g.

Definite article

Indefinite article

Possessive determiner

Definition:

e.g. Her car is green.

Don't get confused! 'Her' can function as a determiner and as a pronoun. The test: is it before a noun? If yes, it is a possessive determiner.

Pronoun

Definition:

e.g.

For more on pronouns, see overleaf.

Conjunction

Definition:

e.g.

Coordinating conjunction

Definition:

e.g.

Subordinating conjunction

Definition:

e.g.

Preposition

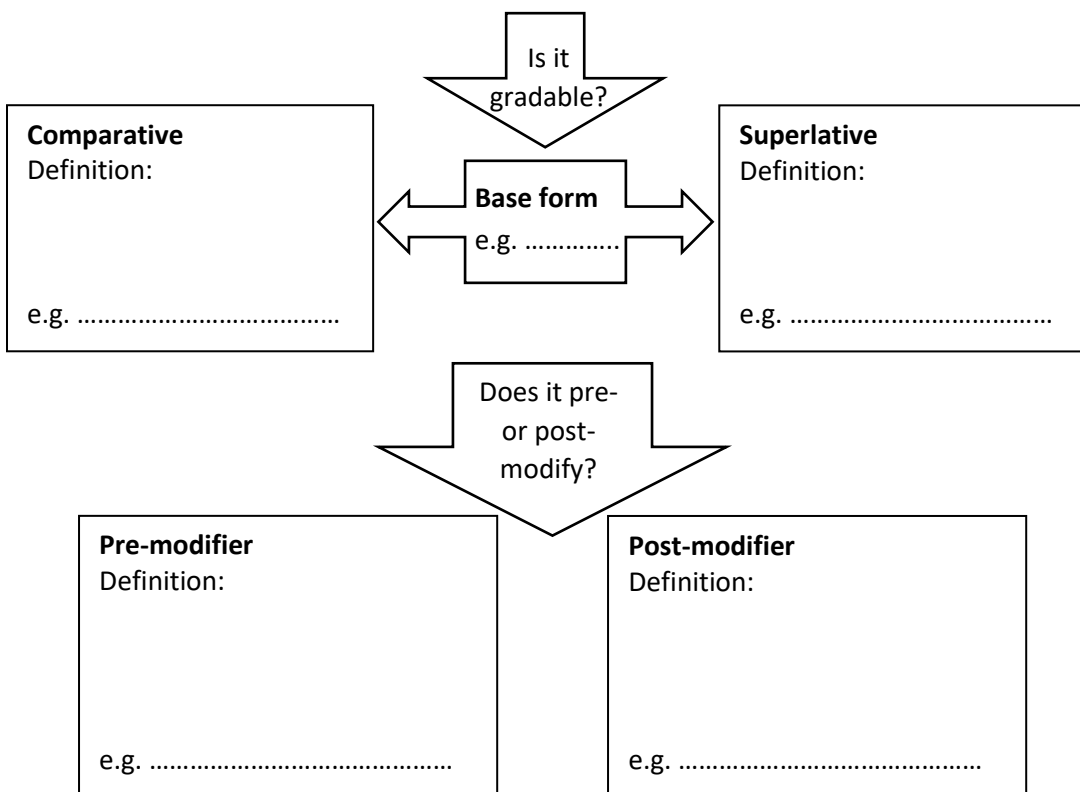
Definition:

e.g.

Pronouns

Personal pronouns		Used as the subject	Used as the object	Possessive pronouns
Singular	First person			
	Second person			
	Third person			
Plural	First person			
	Second person			
	Third person			

Adjectives



Sentence/clause elements (SVOCA)

Subject
Definition:

e.g.



Verb
e.g.



Object
Definition:

e.g.



Complement
e.g.



Adverbial
e.g.

Coordinate clause
Definition:

e.g.

Direct object
Definition:

e.g.

Indirect object
Definition:

e.g.

Subordinate clause
Definition:

e.g.

Non-finite subordinate clause
Definition:

e.g.

Sentence types

Definition	Example
Simple sentence	
Compound sentence	
Complex sentence	
Left-branching sentence	
Compound-complex sentence	
Minor sentence	

Declarative sentences:

e.g.

Imperative sentences:

e.g.

Interrogative sentences:

e.g.

Exclamatory sentences:

e.g.