

# Art & Textile Design

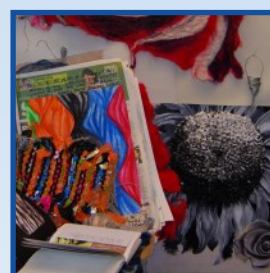
## What is the Course?

The A-Level Endorsed Art and Textile Design course focuses on the creative skills, techniques and processes associated with fine art textiles and fashion design; exploring a wide range of textile media, materials and techniques associated with both decorative and constructed textiles. Through practical workshops, you will explore skills that will allow you to work independently. Engagement and investigation of a wide range of processes, genres and approaches is encouraged; the course allows a personal approach to the development of skills in relation to the exploration of textile art and fashion.



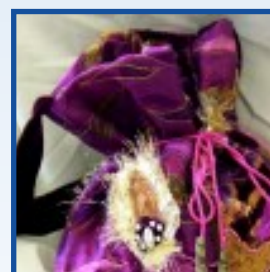
## Year 12

Throughout Year 12 you will experience a wide range of approaches including printed, dyed, embellished, stitched and constructed textiles. The course encourages you to broaden your understanding of the specialisms associated with textile art and fashion design. Year 12 will include a design-based project and a personal project that allows you to explore your own interests within a particular specialism in more depth. The work undertaken during Year 12 will form your textile portfolio of work, which will reflect the discoveries you make during your first year of study at A-Level.



## Year 13

During the A-Level course you will undertake a 'Personal Investigation' that allows you to explore either fine art constructed and decorative textiles or garment design and construction. This project will be based on a theme, concept or starting point of your choice. You will research relevant textile artists and designers and use this understanding to develop your own practical work. Your practical exploration will be supported by written work that documents how your ideas and understanding have developed.



## How is the Textile endorsed course different from the Art and Design course?

If you are particularly interested in experimenting with textile-related media and materials as well as fashion, this course will provide opportunities to experiment in-depth with textile-related skills, processes and techniques. Many of these skills are not covered on the Art and Design course.



# Art & Textile Design

## YEAR 12: Component 1: Portfolio

Worth 60% of your Year 12 studies. A varied portfolio consisting of sketch-books, journals, portfolio work, prints and corsetry make up the Year 12 portfolio.

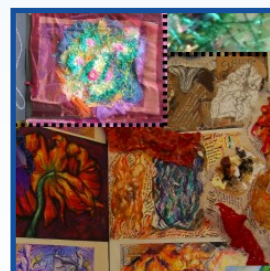
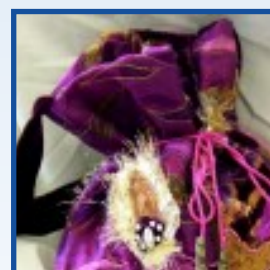
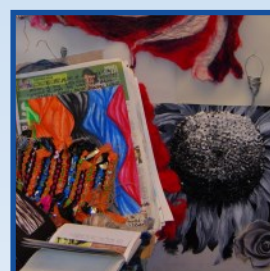


## YEAR 12: Component 2: Exam Project

Worth 40% of Year 12 studies, students select a question, conduct initial research before completing a 10 hour exam at the end of the Year 12 course.

**YEAR 13: Component 1: Personal Investigation** A theme or starting point of your choice, supported by a compulsory written element of 1,000-3,000 words. Worth 60% of the ALevel award.

**YEAR 13: Component 2: Externally Set Task** A series of questions/staring points are set by the exam board. A 15 hour period of 'unaided supervised time' is allocated at the end of the course to create a final piece for the externally set task.



**For further information please contact:**

Mrs C Wyman-Smith (Art Department)

Email: [cwyman@swchs.net](mailto:cwyman@swchs.net)

