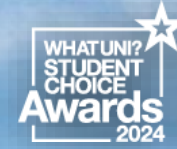




University of
Sheffield



UNIVERSITY
OF THE YEAR



CHOOSING A
COURSE &
UNIVERSITY

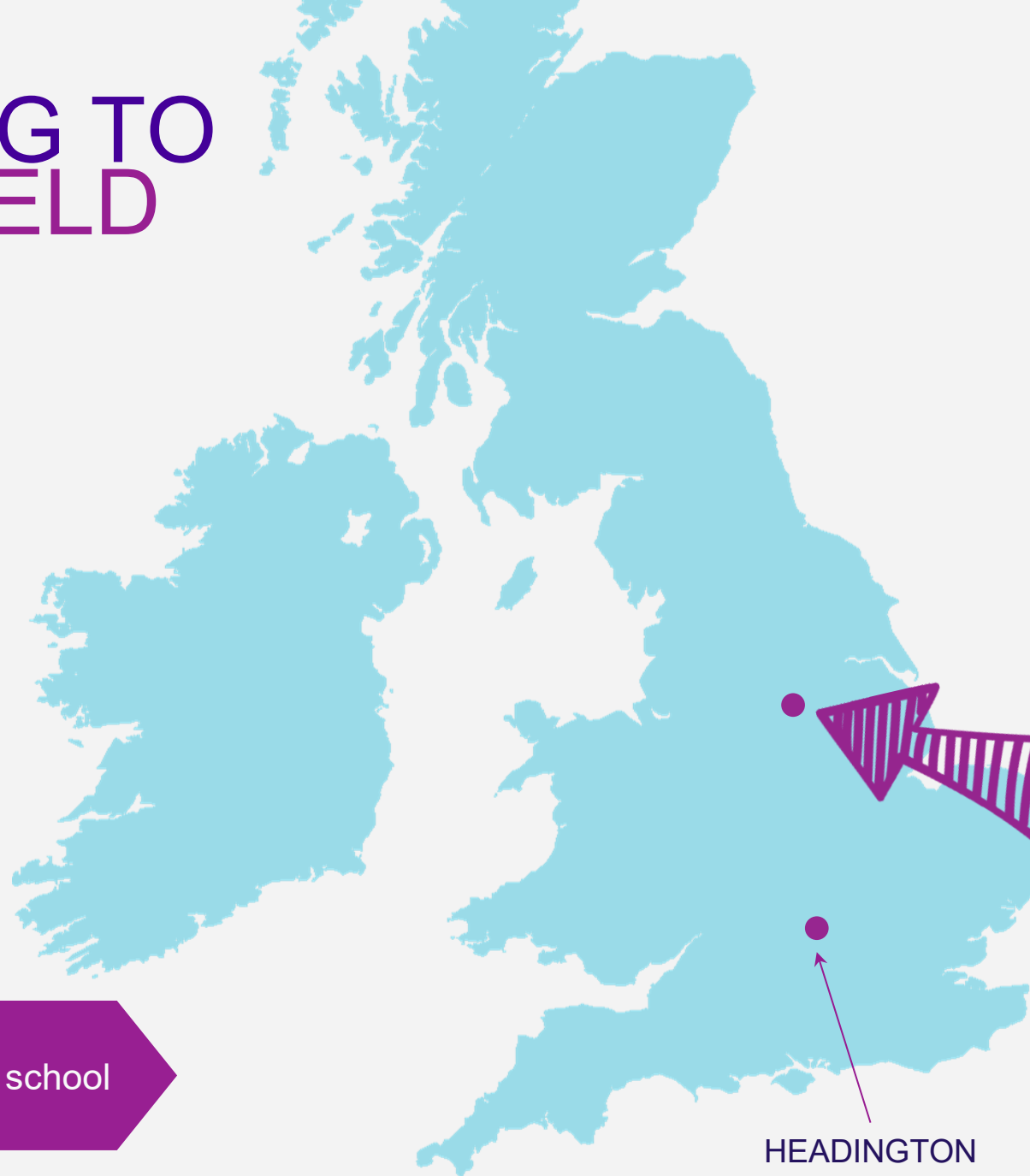
MADE FROM
EVERY
EXPERIENCE

OVERVIEW

- Next Steps
- Choosing a Course
- Choosing a university
- The Selection Process
- Any questions?



GETTING TO SHEFFIELD



Train times from major cities:

- 40 minutes from Leeds
- 50 minutes from Manchester
- 1 hour 15 minutes from Birmingham
- 2 hours from London
- 2 hours from Newcastle
- 2 hours 35 minutes from Bristol
- 3 hours 45 minutes from Edinburgh

SHEFFIELD

X hours mins from your school

HEADINGTON
SCHOOL

NUMBER 1 STUDENTS' UNION

WhatUni Student Choice Awards
2017-2024

NUMBER 1 UNIVERSITY IN THE RUSSELL GROUP

National Student Survey 2024



TOP 20 UNIVERSITY

The Guardian University
Guide 2025

TOP 5 FOR JOB PROSPECTS

Student Crowd University Job Prospects
League Table 2024



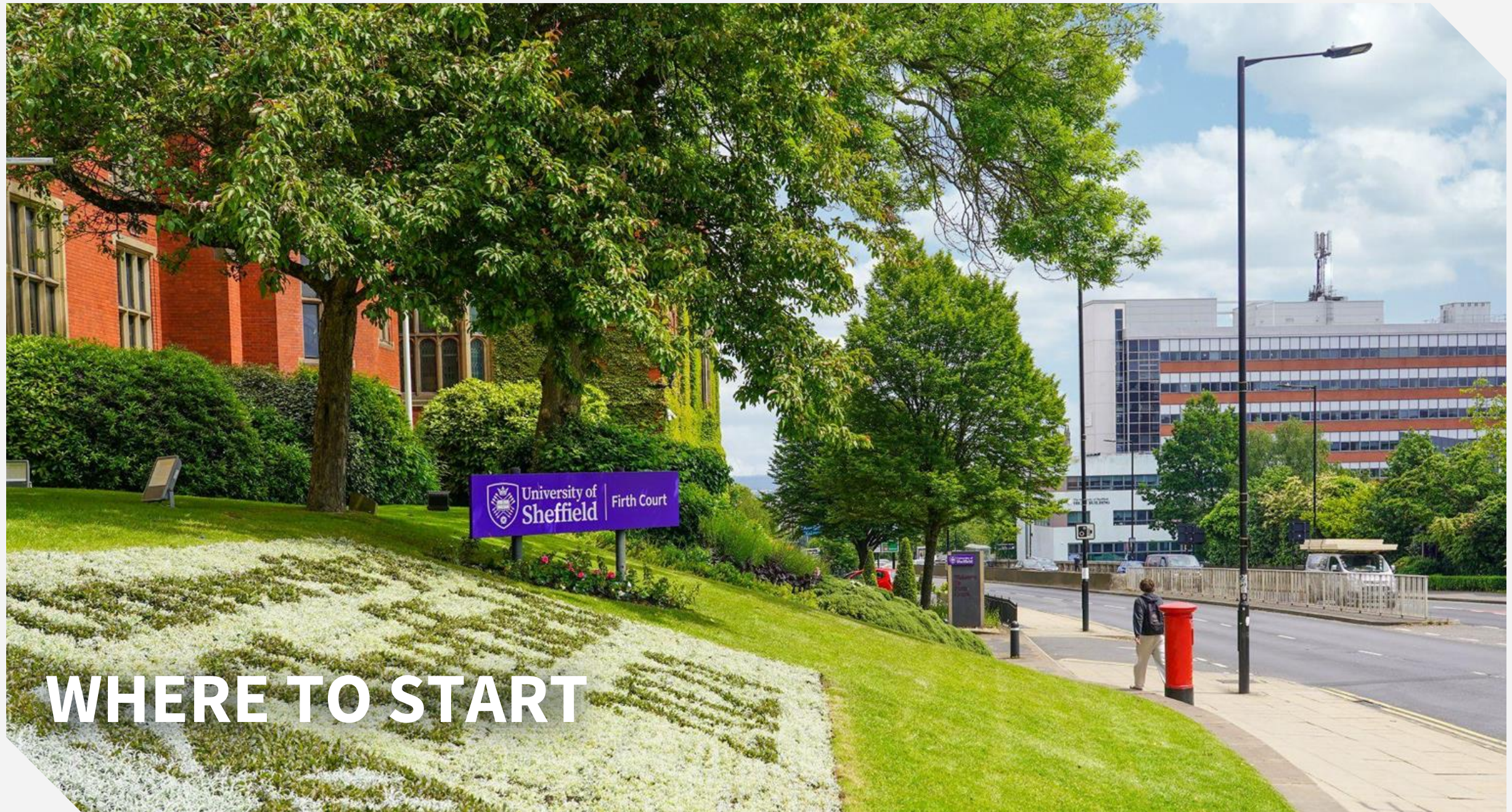
GREENEST CITY IN THE UK

NatWest's Green Cities Report
2021

AFFORDABLE CITY

6th in the RBS Student Living
Index 2024





WHERE TO START

BENEFITS OF GOING TO UNIVERSITY

- Essential for some career paths
- Develop transferable skills and subject knowledge
- Become an independent learner
- Gain new experiences
- Meet new people from a diverse range of backgrounds
- Increase job prospects
- Higher earning potential
- Extra-curricular opportunities



ACTIVITY: DISCUSSION

Imagine you are planning your dream holiday.

- Consider what you would do (winter/ski, beach, adventure, festival, cruise etc.)
- Consider where would you go to do this holiday?
- What other matters are important to you when planning a dream holiday (e.g. travel distance, weather, cost, accommodation, activities available)





CHOOSING A COURSE

COURSE CONSIDERATIONS



LLB

BDS

BA

FdSc

MEng

BVSc

PhD

Acronyms
Can you name them all?

BSc

MChem

MB ChB / MB
BS / BM BS

FdA

MPhys

BEng

FOUNDATION DEGREES

- Lower entry-requirements
- Alternative route to desired degree
- Additional year at University
- Prepare students for their chosen course
- Build confidence, academic skills and subject knowledge
- Progress to standard degree after this
- Adjust to the University environment





ENTRY REQUIREMENTS

Know your predicted grades

This is your starting point – your teachers' professional opinion on what they believe you will achieve.

Be aspirational

If there is a course that is perfect but above your predicted grades – apply! However, be prepared to meet their requirements.

Be realistic

Your insurance choice needs to have lower entry requirements than your firm, so bear this in mind when finalising your shortlist.



EMPLOYABILITY

Accreditation

When the course has been approved by a professional body or organisation to ensure it meets the standards of the industry.

Study Abroad or Industry Placement

Develop desirable skills that make you stand out when looking for a graduate job whilst earning money or living in a new country,

Links with Industry

This could include: networking events, guest speakers, work experience opportunities, scholarships or even the industry standard facilities available.

Can you tell us about your placement?

“I worked at Jaguar Land Rover UK, contributing to groundbreaking projects in the Chassis, ADAS, and Battery departments. Working on developing control architectures for future technologies like the 2028 Range Rover and performing Failure Injection Testing for lane-centring features.

How did the University support your placement search?

The placement team was instrumental, offering weekly job listings and refining my applications. It helped me secure an incredible opportunity.

What difference has the experience made?

It has shaped my career ambitions and confidence. I’ve boosted my technical and problem-solving skills, preparing me for a career in innovative engineering.”

MAYANK SEWATKAR
Computer Systems Engineering with
an Industrial Placement Year



DIVERSE MODULE CHOICE

- Your current learning content has been created for you by other people (the national curriculum is designed by the government).
- Universities all design their own courses. The choice of your learning comes down to you which is exciting!
- Modules at university will vary each year based on what the academics research or speciality is.

45,650 UG
courses!

DIVERSE MODULE CHOICE

BA English Language example modules:

University 1	University 2	University 3
Exiles and Monsters: Reading Old English	Language in the City	Storytelling
Conversation Analysis	Laboratory Phonology	Working with words
Historical Linguistics	Syntactic Theory	Sports Reporting
Advanced Phonetics	Multilingualism	Teaching English
Language and Cognition	Early English, Texts, Patterns and Varieties	Creative writing workshop

DIVERSE MODULE CHOICE

BA Geography example modules:

University 1	University 2	University 3
Earth, Wind, Ice & Fire	Energy Transitions	Glacial Processes
Climate Action	Population Ecology & Management	Work & Employment
Culture, Space & Difference	Critical Vegan Studies	Health & Disease
Territory, Power & Policy	Environmental Economics	Urbanisation
Challenging Development	Environmental Policy Making	Globalisation

ACTIVITY: GUESS THE FAKE

Which do you think are the fake Modules for each course:

- English Literature BA
- Biological Science BSc
- Music BMus



WHICH IS REAL?

English Literature BA

DARWIN, MARX,
FREUD

MYTHS & LEGENDS

HOLLYWOOD CINEMA

ANIMALS THAT TALK

WHICH ARE FAKE?

Biological Sciences BSc

SENSORY
NEUROSCIENCE

SUPERPOWER
PLANTS

PHARMACOLOGY

SYNTHETIC BIOLOGY

WHICH ARE FAKE?

MUSIC BMus

MAMMA MIA

HISTORY OF KOREAN
POPULAR MUSIC

JAZZ STUDIES

FOLK MUSIC
PARTICIPATION

COMPETITIVE COURSES

What is a competitive course?

Simply put, a course where there are more applications than places.

How to tell?

- Early UCAS deadline
- High Entry requirements
- Additional Entry requirements
- Specific work experience required



IS THE COURSE FOR YOU?

What are your motivations and interests?

What are your skills and qualifications?

How can you show you are the best candidate for that course?



**Is the course
for you?**

Extra-curricular

Part-time job

School Alumni

Career
planning

Work
experience

Open Days

Teachers &
Advisers

Volunteering

Analysis /
research

EPQ / MOOCs

Your own
thing...

Wider reading

Additional
responsibilities

LinkedIn

A low-angle photograph of a modern glass skyscraper on the right side of the frame. The building's facade is composed of a grid of dark window frames. The sky is a clear, bright blue, filled with several white, diagonal streaks that resemble contrails or light trails. The overall composition is dynamic and modern.

CHOOSING A UNIVERSITY

WHAT'S IMPORTANT TO YOU?

- Graduate prospects
- League tables
- Russell Group
- Student satisfaction
- History and heritage
- Opportunities
- Campus vs City
- What is right for you

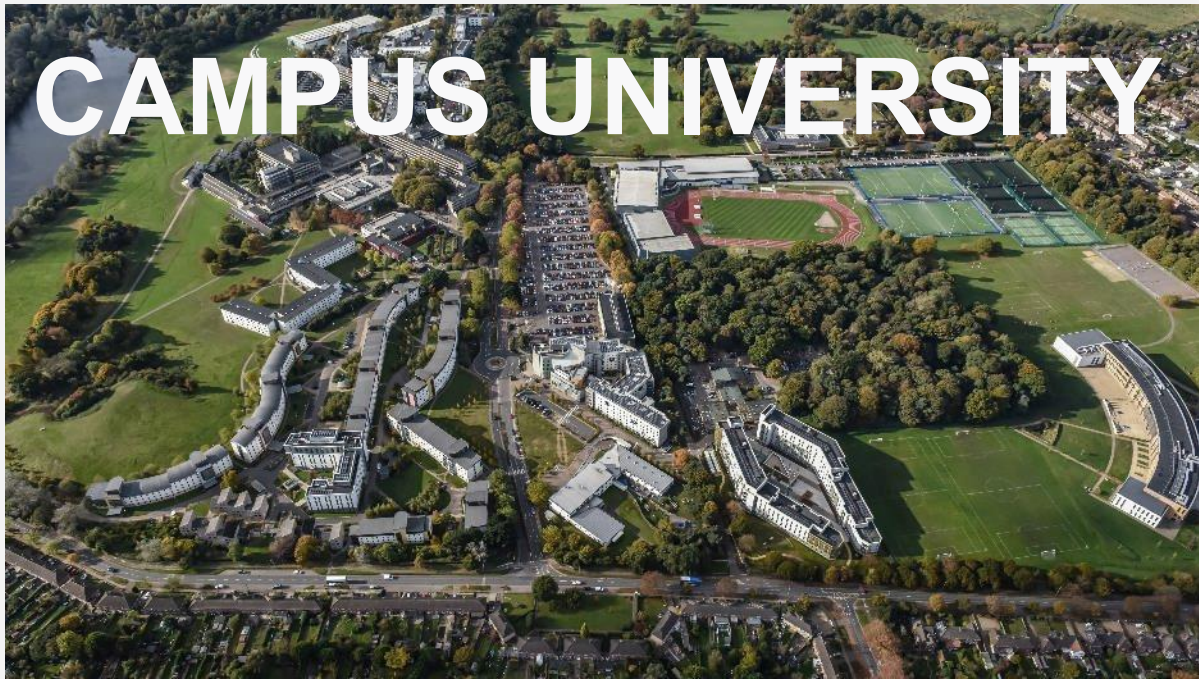


WHAT IS THE RUSSELL GROUP?

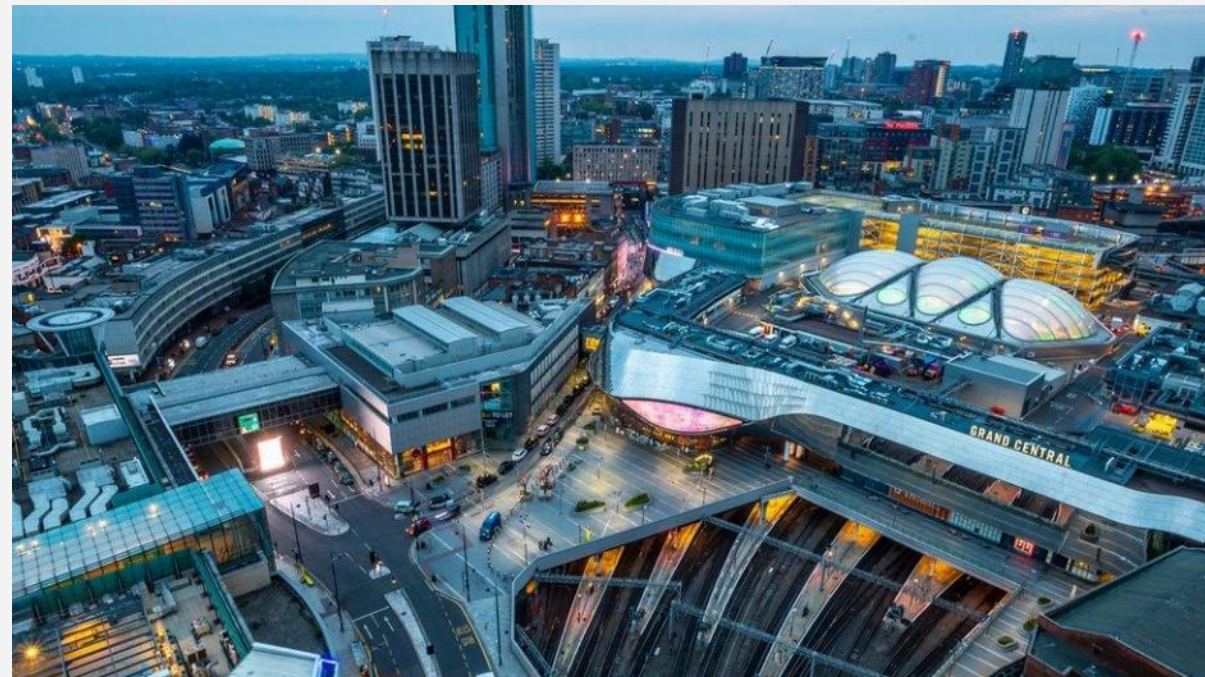
- Active in cutting-edge global research
- Outstanding learning and teaching experience
- Top links with business and public sector



CAMPUS UNIVERSITY



CITY UNIVERSITY





Endcliffe Student Village (20 mins)

Peak District ↑

Sheffield City Centre (10 mins)

The Octagon

Sheffield Train Station (20 mins)

Student's Union

Hicks Building

Firth Court

A CITY CAMPUS

Western Park (1 min)

The Diamond

Crookes Valley Park (1 min)

Jessop West

Information Commons Library

Arts Tower

Western Bank Library

Dainton Building

WHAT ARE YOUR PRIORITIES?



COST OF LIVING
STUDENT LIFE

SOCIETIES & SPORTS

ASSESSMENT STYLES

FACILITIES

ENTRY REQUIREMENTS

STUDY ABROAD OR PLACEMENT YEAR?

REPUTATION & RANKING

CONSIDERATIONS

Location

- Transport links
- Cost of living
- Amenities
- Local vs further away
- Abroad
- Diversity & Inclusion
- Vibe of local city or town
- Safety

Student Experience

- Students Union
- Support services
- Bursaries & Scholarships
- Study Abroad
- Nightlife
- Facilities
- Sustainability

LOCATION

- Distance from home
- Friends and family
- Transport links
- Study abroad
- Local City / Town



ACCOMMODATION

What to consider:

- Room type
- Location
- Atmosphere
- Your budget
- Contract length
- Catered or Self-catered
- Size



YOUR STUDENT EXPERIENCE

- Students Union
- Culture
- Safety
- Nightlife
- Cost of living
- Support Services
- Sports & Societies
- City or Campus?
- Bursaries & Scholarships



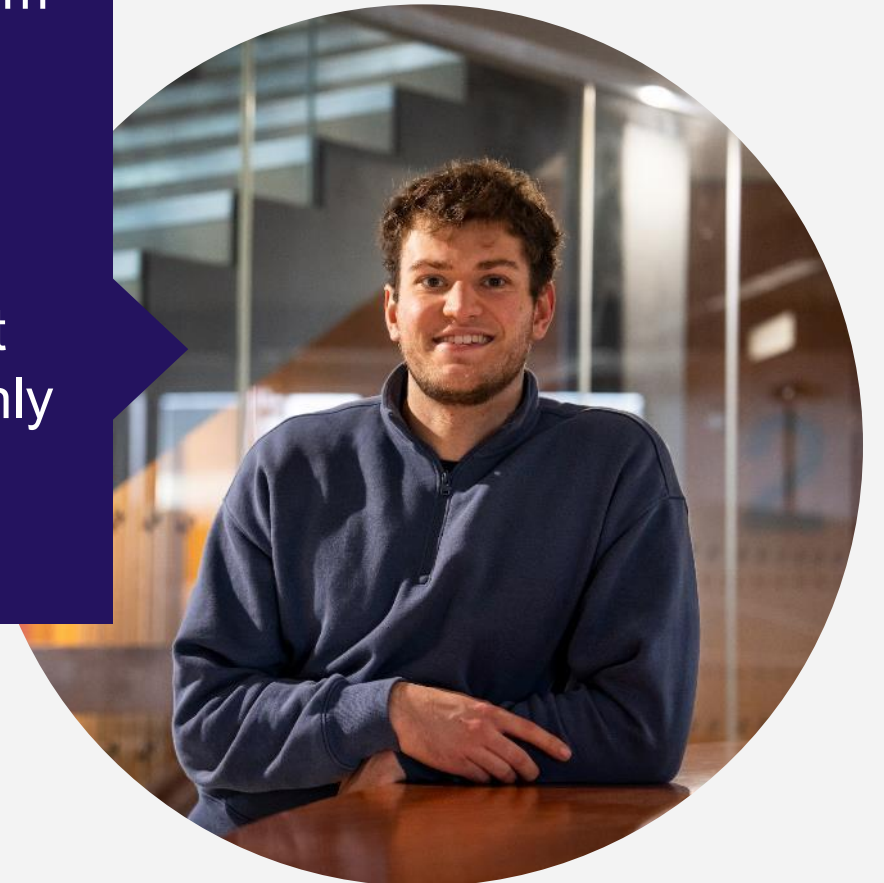
SPORTS CLUBS & SOCIETIES



“I had the opportunity to spend a year abroad during my studies at Sheffield. I split my year in two, spending the first semester studying at the University of Valencia, Spain, and the second semester working for an accountancy firm in Lyon, France.

The experience gave me an insight into two different cultures and the opportunity to work in a total of four different languages. The year abroad was a testing yet incredibly rewarding experience. I learnt so much, not only about other ways of life, but also about myself. Plus, I made so many new friends along the way!”

JOEL LUFTON
Politics, Modern Languages and
Cultures





THE SELECTION PROCESS

WHAT ARE YOUR PRIORITIES?



COST OF LIVING
STUDENT LIFE

SOCIETIES
& SPORTS

ASSESSMENT
STYLES

FACILITIES

ENTRY
REQUIREMENT
&
MODULE
CHOICE

STUDY
ABROAD
OR
PLACEMENT
YEAR?

REPUTATION &
RANKING

SO HOW DO *YOU* CHOOSE?



OPEN DAYS & CAMPUS VISITS

BEFORE YOU ARRIVE

- Book your place
- Plan your day
- Beware of clashes
- Consider logistics

ACADEMIC ACTIVITIES

- Subject talks
- Meet staff & students
- View facilities
- Library tours

EXPLORE THE UNIVERSITY

- Campus tours
- Accommodation
- Students Union
- Sports facilities

DON'T FORGET TO...

- Ask questions!
- Explore the local area
- Make notes
- Compare & Contrast

ACCESS+

As an **Access+** student, you'll have access to support such as:

- a contextual offer up to two grades below the standard A Level entry requirements for your course.
- our [Access+ Travel Bursary](#)
- a dedicated team on hand to answer your questions
- expert online help and guidance sessions to support you in your journey to higher education

You'll need to have made Sheffield your firm choice with UCAS for the opportunity to apply for:

- an [Access+ Transition Mentor](#)
- our [Access+ IT & Equipment Bursary](#)

If you miss the conditions of your offer we'll still give your application additional consideration on Results Day.

If you have any **questions**, please contact us at: access@sheffield.ac.uk

For **details** go to: <https://www.sheffield.ac.uk/access-sheffield/plus>

ACCESS+

You may be eligible for additional support through Access+ if:

- You live in an area of disadvantage (2026 entry and beyond)
- You were entitled to free school meals

Your personal circumstances mean that:

- You're care experienced
- You're a care leaver
- You're a carer
- You're estranged from family
- You have parenting responsibilities
- You're a forced migrant

To check eligibility criteria visit:

<https://www.sheffield.ac.uk/access-sheffield/plus>



THE AMBASSADOR PLATFORM



- **What is it?**

Chat with students to learn about courses, campus life, and university experiences.

- **Why use it?**

- Get honest answers about student life.
- Watch videos and read articles from real students.
- Ask your own questions directly.

- **How to access it?**

Visit the University of Sheffield's "Chat to Us" page

SCAN THE
QR CODE



USEFUL RESOURCES

- UCAS
- Unifrog
- The Student Room
- The Ambassador Platform
- The Uni Guide
- League table websites
- Careers Advisers
- University prospectuses
- University websites
- Taster sessions
- Open Days



FOR MORE INFORMATION



@sheffielduni



@sheffielduni



The University
of Sheffield



@theuniversity
ofsheffield

SHEFFIELD LIVE

[sheffield.ac.uk/study/
online-events](https://sheffield.ac.uk/study/online-events)

TASTER SESSIONS

[Sheffield.ac.uk/
undergraduate/visit/
subject-tasters](https://Sheffield.ac.uk/undergraduate/visit/subject-tasters)

CHAT TO CURRENT STUDENTS

[Sheffield.ac.uk/study/
chat](https://Sheffield.ac.uk/study/chat)

DON'T FORGET TO...

Ask questions
Do your research
Find what's right for
YOU

CONNECT WITH US

- 🌐 sheffield.ac.uk
- 📺 @sheffielduni
- 📷 theuniversityofsheffield
- 📘 theuniversityofsheffield
- 📺 @universityofsheffield

SCAN THE
QR CODE



University of Sheffield

ANY QUESTIONS?

MADE FROM EVERY EXPERIENCE

