

# A Level Photography Induction Lesson 1

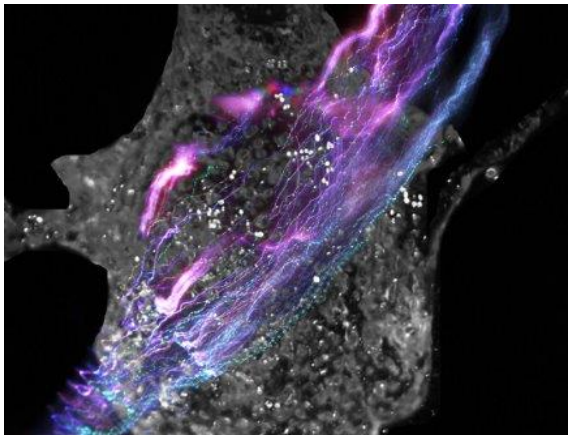
**Welcome** - Introduction to the Course

# Course Structure – 2 Years

Yr12 Photography	A Level Photography – Progression & Yr13
<p><b>Component 1</b></p> <p>'Portfolio' – A series of Workshop Projects &amp; an Extended Project</p> <p>60% of Yr12 September – February 96 marks</p>	<p><b>Component 1</b> 'Personal Investigation'</p> <p>60% of A Level September - February 96 marks</p> <p>The Personal investigation is supported by a compulsory Written Element of 1000-3000 words, set and marked by SWCHS and moderated by AQA</p>
<p><b>Component 2</b></p> <p>Internally Set Exam Project – A choice of a selection of questions from past A Level Exam papers</p> <p>40% of Yr12 Supervised Exam time 10 hours 96 marks</p> <p>Work produced will be marked by SWCHS</p>	<p><b>Component 2</b> A Level Externally Set Assignment</p> <p>40% of A Level Supervised time 15 hours 96 marks</p> <p>Work produced will be marked by SWCHS and moderated by AQA</p>



SWCHS A Level Work



# A Level Photography

## Summer Work - Part 1

Learning your **Technical Know-How.....**

**Why do we need to know the technical stuff?**

**How can you learn the technical aspects you need in an easy and efficient way?**

**Lets get familiar with photography lingo and ways to research.....**

# Technical Reading - Summer Task

Across the next couple of slides we will introduce you to popular photographic questions, history and technical knowledge. We would like you to look through these and to do some research of your own.

- We believe there is a wealth of knowledge to be found in YouTube tutorials and through websites such as TEDEd / TED talks / BBC Bitesize, alongside gallery websites. **Do not forget though that BOOKS are also amazing!!**
- In your research, Collate technical research, names and imagery of artists and photographers you like, photography and exhibition articles and YouTube videos of interesting photoshop edits you want to try.

**How will you collate your research? – plan a strategy now that you can use throughout the year:**

- **Option** - You could turn your research into an on-going PowerPoint, Milanote or Pinterest Board for your own reference..... You will need to be able to access this via phone or laptop on your 1st lesson.



## **Example question and research found:**

1. What is the history of Photography and what impact was made on the development of photography by, Niepce, Henry Fox Talbot, Louis Daguerre and Kodak (George Eastman)? **Lets watch:**

## Example question and video research found:

1. What is the history of Photography and what impact was made on the development of photography by, Niecephore, Henry Fox Talbot, Louis Daguerre and Kodak (George Eastman)?

## Lets watch

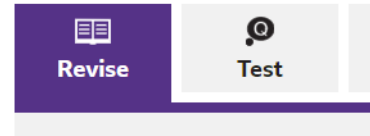
— click on the videos to play,  
then move on to the next slide:

# YOUR research – where to start:

**Start** by reading through **BBC Bitesize – Photography**.

On this website you will need to read through and watch various videos under the **REVISE** section to learn the mechanics of a camera and physics of light. We would also like you to take the **TEST** that is offered to check your knowledge:

<https://www.bbc.co.uk/bitesize/guides/zgwpnbk>



## Technical Questions we want you to research.

### Add relevant info you find to your preferred method of collation:

1. Is the camera like the human eye?
2. What is a Camera? How does it work? – find out about the physical body of a manual SLR film camera, look up what the term ‘exposure’ means and why we use an ‘aperture’ and ‘shutter speed’. What does the term SLR mean? What is ISO?
3. How does a digital camera work? What is the difference between a digital and analogue (film) camera?
4. What is a camera lens? What are the different lenses? What is ‘focal length’? – look up information about a standard lens, prime lenses, zoom lens, macro lens, portrait lens and wide-angle lens.

**The following slide contains various websites / tutorials we suggest you explore to find answers to some of these questions and learn about the technical side of the camera and photography.**



## Research sources to get you started:

**TedEd:**

<https://youtu.be/OGqAM2Mykng> - Eye vs Camera

<https://youtu.be/KUiemQTEOYQ> - What Cameras See that our Eyes Don't

<https://youtu.be/-6Doq-mdx6w> – How to Take a Great Picture.....

**Apalapse - YouTube – How.....works?**

**Various photographic animated tutorials on aperture/ shutter speed / ISO and Focal Length:**

<https://www.youtube.com/channel/UCJFMWWscsO-msPiLj42eXiQ>

**What is an SLR?:**

<https://youtu.be/2tiqxiHnv1M>

**Film vs Digital – please ignore the advertising in this link:**

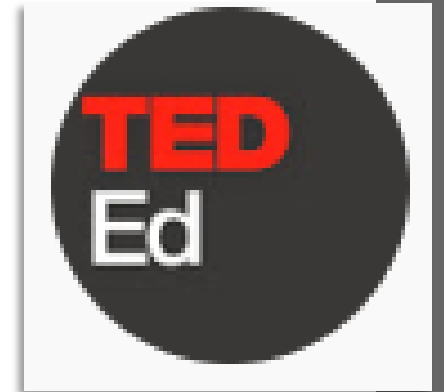
<https://youtu.be/XdmJBYaPuLk>

**How to Shoot Manual in 10 minute – Aperture / Shutter Speed and Exposure:**

<https://youtu.be/uyXiWF3ml2s>

**Photography (digital in this case) Basics in 10 minutes!:**

<https://youtu.be/V7z7BAZdt2M>



**Again – remember to look in BOOKs too.**  
**We love the internet but there is no comparison to a gorgeous book 😊**

Thank you again for taking part in  
Induction Lesson 1.

We look forward to seeing how you  
have chosen to collate your  
research when we are back in  
school in September 😊

Let's move on to Induction Lesson 2  
Summer Work – Part 2