



Welcome to Saffron Walden County High School

Ms Lankester
Headteacher



Mr P. Singh
Assistant Headteacher
Director of Student Achievement
(KS3)

psingh@swchs.net

GO4 Schools



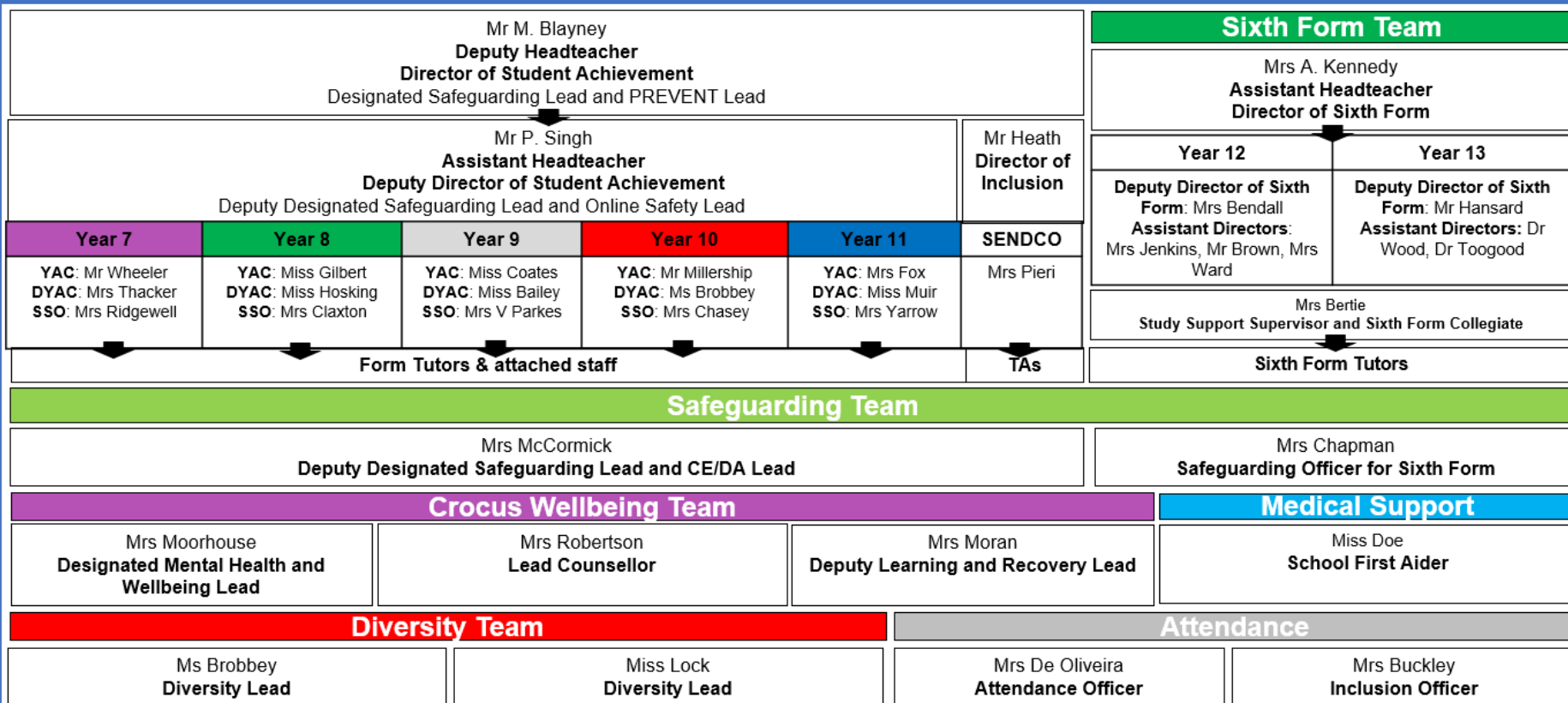
4 SCHOOLS

- ▶ Progress reports
- ▶ Timetable
- ▶ Behaviour
- ▶ Achievement
- ▶ Communication via home notes (weekly updates)

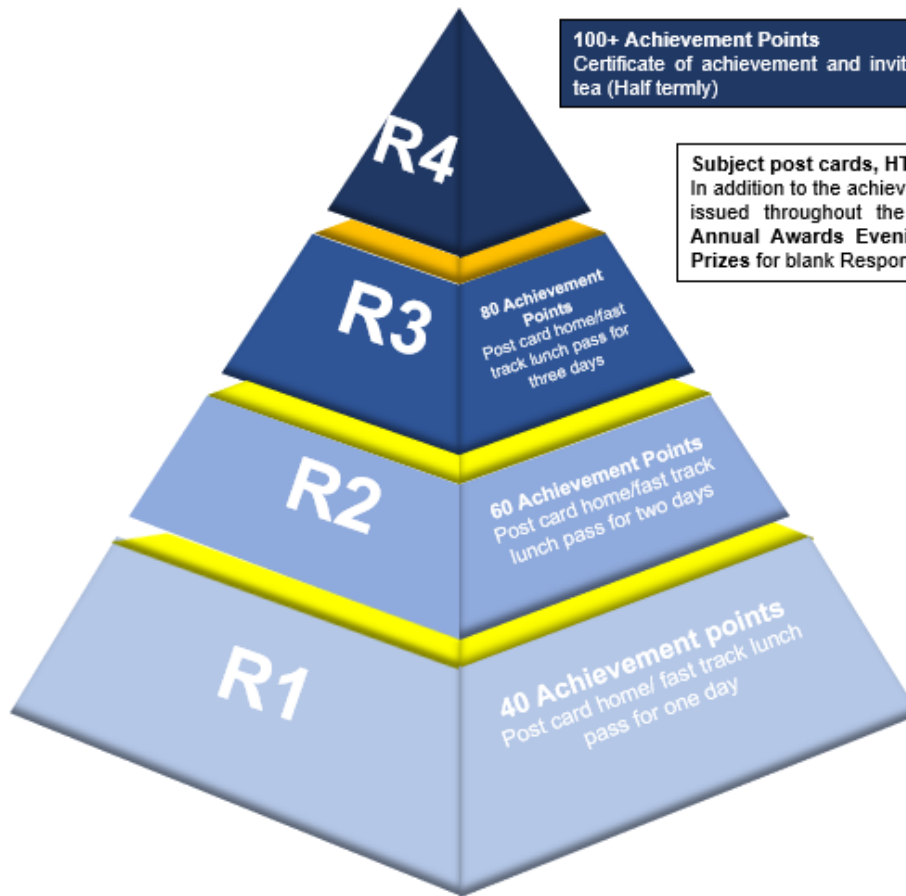
Pastoral Structure 2023/24



Student Achievement and Pastoral Support Team



Recognising Achievement at SWCHS



100+ Achievement Points
Certificate of achievement and invitation to afternoon tea (Half termly)

Subject post cards, HTC's, Awards Evening and Amazon Vouchers
In addition to the achievement point system, we also have Subject specific postcards issued throughout the academic year. Termly Headteacher's Commendations, Annual Awards Evening in the summer term and our Termly Amazon Voucher Prizes for blank Responsibility Cards.

80 Achievement Points
Post card home/fast track lunch pass for three days


60 Achievement Points
Post card home/fast track lunch pass for two days

40 Achievement points
Post card home/ fast track lunch pass for one day



The SWCHS Behaviour Approach





SWCHS Responsibility Card

THIS CARD MUST BE PRESENTED TO STAFF UPON REQUEST. FAILURE TO DO SO WILL RESULT IN AN AFTER-SCHOOL DETENTION.

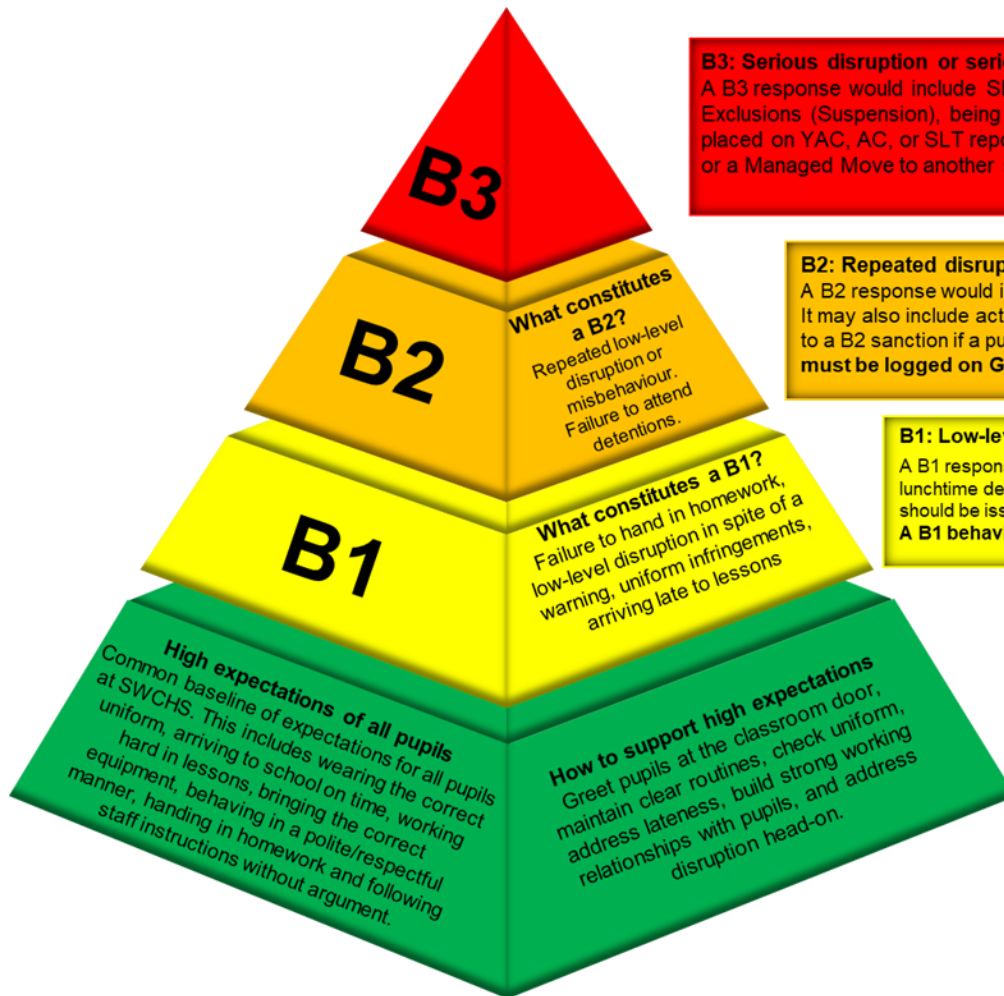
| | |
|-------------------|-------------|
| Name: | |
| Form: | |
| Issued by: | |
| Date: | Autumn 2019 |

This card is used to record Amber Warnings that you receive during the Term. If you receive four Amber Warnings within one term you will receive a Pastoral Detention (60 minutes). If you receive eight Amber Warnings you will receive a School Detention (70 minutes) and if you receive twelve Amber Warnings you will be placed into a Friday Detention (100 minutes).

Amber Warnings 4 = Pastoral detention (60 minutes) 8 = School detention (70 minutes) 12 = Friday detention (100 minutes)

| Date | Infringement code | Staff initial | Date | Infringement code | Staff initial |
|------------------------------------|-------------------|---------------|--|-------------------|---------------|
| | | | | | |
| | | | | | |
| | | | | | |
| | | | | | |
| Pastoral detention set for: | | | Friday detention set for: | | |
| | | | <u>Infringements code:</u> U = Uniform E = Eating/Drinking in school L = Littering F = Foul language B = Unruly corridor behaviour J = Jewellery La = Late to lesson (Periods 2—5) | | |
| | | | | | |
| | | | | | |
| | | | | | |
| | | | | | |
| School detention set for: | | | | | |

The SWCHS Behaviour Approach



B3: Serious disruption or serious misbehaviour

A B3 response would include SLT detention, isolation from lessons in the Isolation base, Fixed-Term Exclusions (Suspension), being subject to a behaviour contract or Individual Behaviour Plan (IBP), being placed on YAC, AC, or SLT report. In the most serious of cases a B3 may result in Permanent Exclusion or a Managed Move to another school. **A B3 behaviour must be logged on Go4Schools.**

B2: Repeated disruption or misbehaviour

A B2 response would include actions such as an after-school detention, School detention or Pastoral detention. It may also include actions such as Subject or Form Tutor report. A B1 sanction can be immediately escalated to a B2 sanction if a pupil persists in disrupting a lesson or requires Area on-call. **Outside of A B2 behaviour must be logged on Go4Schools.**

B1: Low-level disruption in lessons

A B1 response would include actions such as a lunchtime detention within a subject area. **One warning** should be issued before a child receives a B1 sanction. **A B1 behaviour must be logged on Go4Schools.**

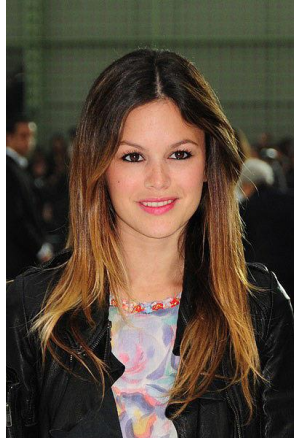
B1: Low-level disruption outside of lessons

A B1 response outside of the classroom would include actions such as issuing an Amber Warning for any low-level infringements on the corridors or at break/lunchtimes. **This should be logged on the SWCHS Responsibility Card.**

Uniform



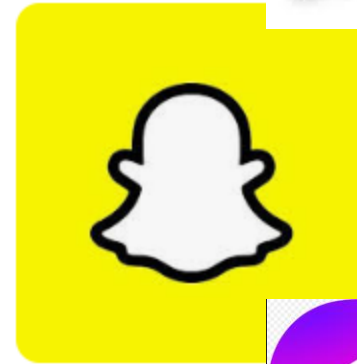
Hair, Makeup, Jewellery



Social Media



- Avoid large group chats
- Encourage your child to be kind and respectful whilst communicating online
- Encourage your children to be social in person
- Ensure the content being accessed is age appropriate
- Continue to have conversations with your child about social media and their online interactions/friendships
- Set the boundaries now in readiness for September



The Online Pandemic of child sexual abuse imagery ([Internet Watch Foundation](#))



- ▶ The [IWF](#) employs 85 Internet content analysts who work to remove images or videos showing sexual abuse of children around the world. Last year, the [IWF](#) assessed 392,665 reports of child sexual abuse imagery. Out of this number, 275,652 were confirmed to show illegal images. The creation of the worst levels of such imagery (Category A) has risen by 22% in the past year.
- ▶ The fastest growing age group of child sexual abuse imagery are children between the ages of 7 to 10 years old. 92% of such images are self-generated.

What can we do?



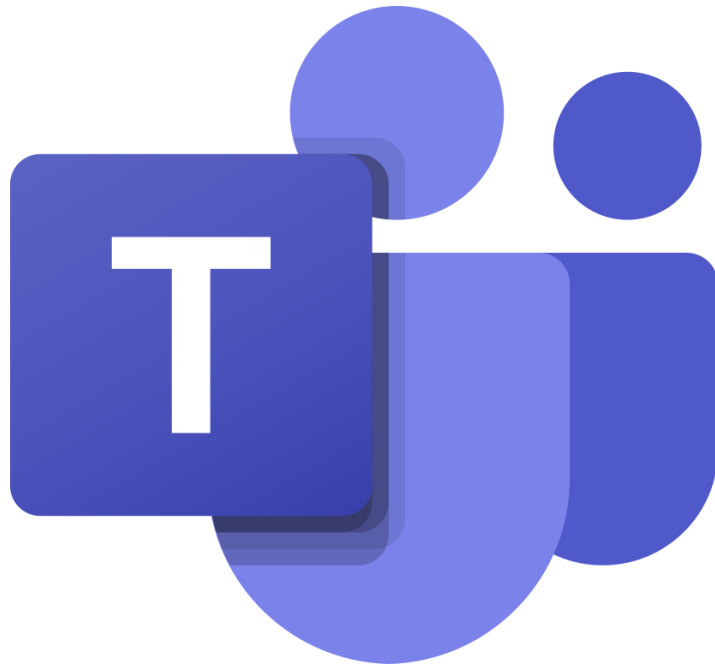
- ▶ **T:** Talk to children about sexual abuse online.
- ▶ **A:** Agree ground rules surrounding the use of technology.
- ▶ **L:** Learn about the platforms and Apps that children use.
- ▶ **K:** Know how to use tools and apps to support safer use and control.

Useful resources & support/advice:

- ▶ [Report remove](#)
- ▶ [Take it Down](#)
- ▶ [Childnet Parent and carer toolkit](#)



Microsoft Teams



- Microsoft Teams is a platform your child will use frequently:
- ▶ Each class has a Team that your child will be a member of.
 - ▶ Homework is set as assignments and resources are posted in the Team.
 - ▶ Your child can message their teacher.
 - ▶ Each year has a Team for community posts from the year team.

Parental Communication





- ▶ Parentmail– most common way of disseminating information as quickly as possible.
- ▶ Message via the School Office or via the Planner
- ▶ The first point of contact for any pastoral issues should be the **Form Tutor**. In addition to tutorials, it is their responsibility to deal with the daily issues affecting their form.
- ▶ Any subject specific issues should go via the subject teacher and or Subject Leader
- ▶ Email Year Office at Year7office@swchs.net
- ▶ Meeting – **by appointment only.**

Wisepay



- ▶ **WisePay account.** Log in details for Wisepay will be sent before the start of the summer holidays. This needs to be done before 1st September.
- ▶ If you have **not** given consent for your child to have their finger scanned please let the year office know.

WisePay

 Saffron Walden County High School [Home](#) 

Welcome to our Online Payment Area

Log In

COOKIE INFORMATION - By logging in, you accept that cookies will be used during your visit to WisePay. [Further information >](#)

USERNAME/EMAIL PASSWORD [Log In](#) [Forgotten Password ?](#)



Mrs Fox

Year 7 Year Achievement Coordinator (YAC)

Miss Muir

Year 7 Deputy Year Achievement
Coordinator (Deputy YAC)

Mrs Yarrow

Student Support Officer (SSO)

Year7office@swchs.net

Year Team Support



- ▶ **Mrs Fox (YAC), Miss Muir (DYAC) and Mrs Yarrow(SSO):** Overview of academic progress & achievement as well as pastoral support.
- ▶ **Form Tutors:** The first point of contact
- ▶ **Form Groups:** We have used the information provided by Primary schools & our many years of experience to create the form groups. These are balanced academically & pastorally to consider the needs of all of the students. They provide a fresh start and a chance to make new friends.

Year 7 Forms September 2024



S Half

7EKP- Miss Kent-Peters

7CXS- Mrs Southcott/Mrs Bretton

7LXK- Mrs Kizewski

7SWM- Mr Macfie

7BCG- Mrs Gilbert

Email for staff is always first initial followed by last name @swchs.net

W Half

7CL- Mrs Lucas

7KMM- Mrs Motson/Ms Hargett

7CJH- Mr Holman

7WRS- Mr Scheilling

7ET- Mrs Trott

For example: Miss Kent-Peters becomes ekent-peters@swchs.net

Home – school partnership



- ▶ **There is a powerful association between positive parental involvement and student achievement and attainment.**
- ▶ **Parental involvement in the form of at-home interest and support is a major influence upon educational outcomes**

DfE Research

What we do in school ...



- ▶ Regular and rigorous checking of progress
- ▶ High-quality teacher input
- ▶ Interventions
- ▶ Many classes will have additional support
- ▶ Extra Curricular Activities
- ▶ Homework Clubs
- ▶ A focus on independence and a focus on the individual

What we ask of you.....



- ▶ Liaise with the school and communicate concerns.
- ▶ Help with organisation and getting students into routines – including sleep and hygiene over the summer holidays! Your support is essential in the early days.
- ▶ SW(it)CH it off at 8pm. We recommend that phones/electrical devices are not used after this time or in pupil's bedrooms. If we all do this and work together it makes life easier.
- ▶ Be aware of your child's online activities and gaming – check they are age appropriate.
- ▶ Support the professional judgements of staff at SWCHS. If in doubt, contact us.

Timetable Organisation



- ▶ **Week 1 / Week 2**
- ▶ 5 Lessons a day = 50 lessons **per cycle**
- ▶ 4 lessons in the morning; 1 in the afternoon

Morning break – 10.45am – 11.00am

Lunch break – 1.10pm – 1.55pm

Registration or weekly assembly – 2.00pm – 2.15pm

Broad curriculum of subjects, mixed ability teaching in most subjects.

Key Stage 2 Data



- ▶ We have received official data about students from primary schools .
- ▶ We are collecting other information from primary schools.
- ▶ We will collect our own data
 - ▶ Baseline assessments
 - ▶ Year 7 CATs
 - ▶ This goes on to formulate our Minimum Attainment Bands (MAB)
 - ▶ Year 7 Reading tests

Organisation



Every Day

Reading Book
Pencil Case
Green Pen
Whiteboard pen
Lunch / snack / Wisepay
Homework Tasks
Correct exercise books
Water bottle
Locker Key
Planner / Timetable

Set Days

PE Kit
Ingredients for Food
Technology
Calculator (Wisepay)



PLEASE LABEL EVERYTHING!

Homework – Year 7 Allocation



- ▶ Students will be set homework in core subjects, languages.
- ▶ In addition, guided reading will be set by all subjects throughout the year
 - Up to 90 mins per fortnight for Maths
 - Up to 60 min reading per fortnight for English
 - Up to 30 mins per fortnight for Science
 - Up to 30 mins per fortnight for French
 - Up to 30 mins per fortnight for
 - Up to 60 mins of Guided Reading
 - This equates to up to **5 hours per fortnight**

Attendance



96%

An expectation that students will have attendance of better than 96%

Persistent Absence – attendance lower than 90%

We monitor attendance very closely and have a School Inclusion Officer

Please complete a leave of absence form (LOAF) for any request for absence.

Parents must phone on each day of absence. If there are attendance concerns, medical evidence will be required for all absence to be approved

Pupil Premium Grant



- ▶ A grant based on information from DfE & Primary schools to support the learning of students who:
 - ▶ are eligible for Free School Meals
 - ▶ have received them at some point in the last six years
 - ▶ are looked after (Children In Care)
 - ▶ are adopted
 - ▶ have a parent who is in the services
- ▶ Support available to PPG students:
 - ▶ uniform bursary
 - ▶ music / Drama lessons
 - ▶ financial support with trips
 - ▶ financial support with educational resources
- ▶ If you think your child is eligible but you haven't had any information, please see one of us this evening. Please claim for FSM if you're eligible!

Young Carers



- ▶ A Young Carer is a child, under 18, who provides regular and on-going care to another person who is physically or mentally ill, disabled or misuses substance. They may:
 - ▶ Help with the cooking
 - ▶ Provide emotional support to parents
 - ▶ Collect prescriptions
 - ▶ speak on behalf of someone who has difficulty speaking/communicating
 - ▶ Looking after brothers/sisters by picking them up from school, doing their laundry
 - ▶ Help anyone take medication regularly

- ▶ Support available to Young Carers:
 - ▶ Designated Essex Young Carer Key Worker
 - ▶ Access to our Lunch club, on a Wednesday
 - ▶ Teacher awareness
 - ▶ Counselling services where necessary

- ▶ If you think your child is eligible please get in contact with Alice Thacker
athacker@swchs.net

Summer Task



- ▶ "This is me" photos or items
 - ▶ 2 photos or three drawings
 - ▶ helps to bring discussion around who they are
 - ▶ Can be objects, places, people, hobbies etc



Students to bring their photos in on Wednesday 4th September



SEND Provision at SWCHS

Mr P Heath Director of Inclusion

pheath@swchs.net

SEND Provision



"Assisting students to become independent and courageous learners is a key aim. Ensuring that they leave school with the necessary skills to be independent, including academic skills, is key to the success of our students."

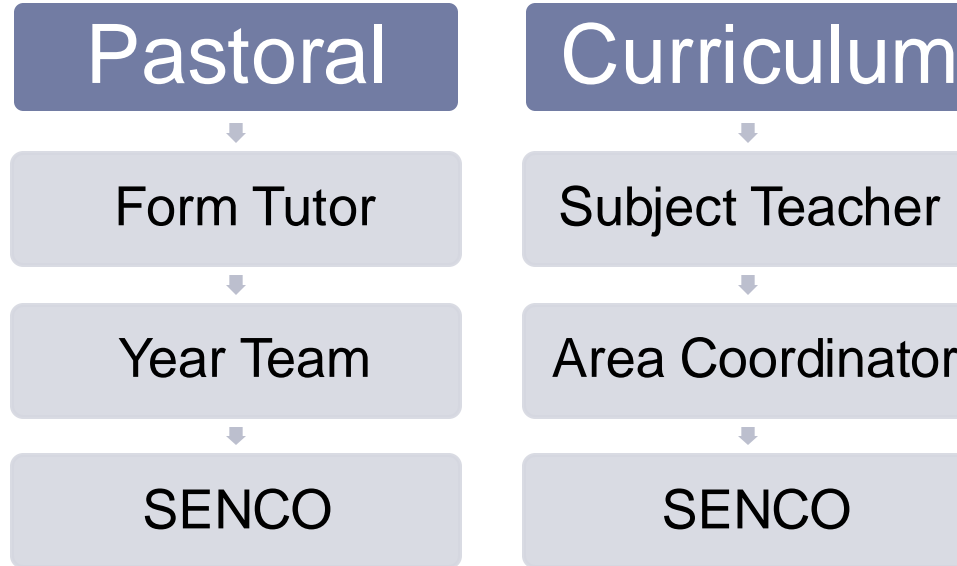
Our Department

- ▶ Two SENCOS and two associate SENCOS, a Deputy SENCO and three Lead TAs
- ▶ Our TAs are based in subject areas
- ▶ TAs plan with teachers termly. This planning is what you may know as a One Plan.
- ▶ Long or short term support, needs led system
- ▶ Communication is key

Good communication



- ▶ It is better to contact us early with a small issue, rather than wait until it becomes a huge problem.





Saffron Walden County High School

Ms Lankester
Headteacher



France 2024

France 2025



- ▶ In June 2025 all students will have the opportunity to travel to France for a day
- ▶ The trip is part of our commitment to ensuring that our students are offered opportunities and gain a rich cultural capital during their time at secondary school
- ▶ The trip is designed to give students the opportunity to travel with their peers and teachers to experience visiting a foreign country





Proposed Itinerary

- ▶ Depart school in the early morning and board the coach.
- ▶ Arrive at Dover and board a ferry crossing to Calais – students have time to explore the boat and get some breakfast.
- ▶ Travel by coach from Calais to a local bakery. At the bakery they will learn how to make croissants or baguettes in an immersive French experience. Students are also provided with a lunch.
- ▶ Students then travel to the nearby Boulogne Sur Mer, where they explore the old, fortified city and have a chance to grab a treat and practice their French in shops.
- ▶ Students return home on the Euro Tunnel and arrive back at school in the evening.





Estimated Costs

- ▶ The total estimated cost for this trip is £135
- ▶ The cost of the trip will be spread out over four payments:
 - ▶ **£40 in September**
 - ▶ **£35 in October**
 - ▶ **£30 in March**
 - ▶ **£30 in April/May**
- ▶ To support those who want to go there will be a number of full bursary funded places and some half price bursary funded places.
- ▶ More information will be included in the trip letter in September. We hope everyone will want to go!



SAFFRON WALDEN COUNTY HIGH SCHOOL TRUST

(Registered Charity No. 298343)



MUSIC TECHNOLOGY


A person is seen from behind, wearing large black headphones and playing a MIDI controller on a desk. In front of them is a computer monitor displaying a software interface. The setting appears to be a music technology or recording studio.

THE PAVILLION

The exterior of a pavilion building with a brown tiled roof and a covered walkway. The walkway is lined with wooden benches. A few people are sitting on the benches. The building has large glass doors and windows. The foreground is a green lawn.

More choice and space at lunchtime:





Other recent major projects

- Support for an outdoor classroom area for the Agricultural Science Unit
- Funding to put in an improved 6th Form Café
- Support for a second outdoor Café “Pod”
- Support for the Cricket Nets

School funding is under pressure

And funding in Uttlesford is some of the lowest in the whole country.

This makes support
from parents more
crucial than ever

What else has the Trust supported recently?



A lighting Desk for Drama.



Cameras and tripods for Film and Media.



New textbooks for Spanish, French, German, Geography and History.



Lighting boxes for Graphics.



Equipment for Maths.



Educake on-line HW platform



Support for Science experiments



Revision materials

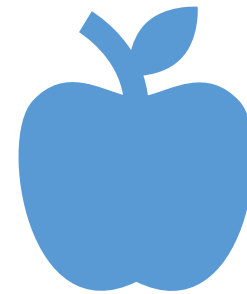


Resources for Social Sciences

And outside the classroom



Support for discretionary free
school meals

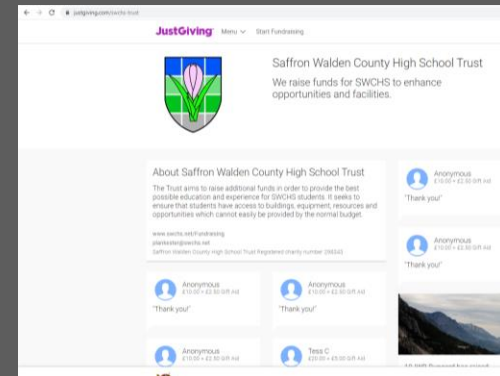


Support for well-being
provision

How can you help?

Support events such as:

- Our “SWCHS Summer Party”



Make a regular or one off donation:

- Just Giving
- Direct Debit
- Wisepay



Donate to SAFFRON WALDEN COUNTY HIGH SCHOOL

Donation amount

One-off

Monthly

£

GBP ▾



Upgrade to a regular donation to help your charity make a bigger impact.

[Set up a monthly donation today](#)

Hide donation amount from public view

Continue

DONATE WITH CONFIDENCE



No platform fees for charities



100% secure payments



Excellent on Trustpilot

Thank you to...

Contamac[®]

[Products](#) [About](#) [Global Insight](#) [Careers](#) [Contact us](#) [Q](#)

Our company



Who we are

Contamac is the world's largest manufacturer of contact and intraocular lens materials, and a leading innovator in the development of specialist polymers and biocompatible materials for medical applications. We don't make contact or intraocular lenses - our customers do, from our materials.

Our aim is to improve the Vision and wellbeing of millions of people worldwide.

Our 90,000 sq. ft. (8,360m²) headquarters in Saffron Walden, England - just outside the university city of Cambridge - features an ISO7 (Class 10,000) clean room and state-of-the-art manufacturing, research, office and laboratory facilities - all of which provide the infrastructure and environment to meet and exceed our customers needs and expectations.

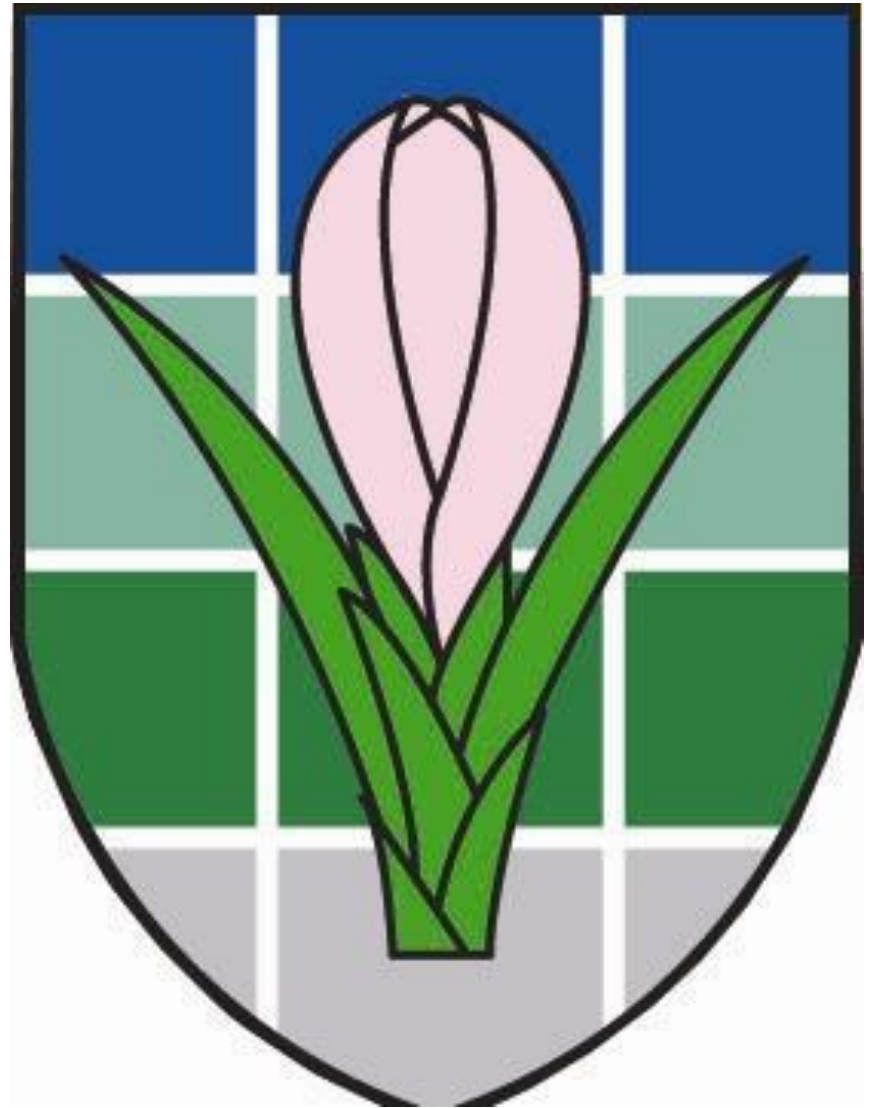
Contamac is proud to be a two-time recipient of the Queen's Award for Enterprise and is accredited to ISO 9001 and ISO 13485. We pride ourselves on being an international company in every sense.

How can we help? [Contact us](#)

Contamac[™]

**SAFFRON WALDEN COUNTY
HIGH SCHOOL TRUST**

(Registered Charity No. 298343)



And finally....



- ▶ This presentation will be saved in the Year 7 area of the school website.
- ▶ You will receive all key dates within your welcome letters
- ▶ We will respond to any general questions now. If you have any questions relating specifically to your child, please see staff at the end.
- ▶ Thank you for taking the time to come in and meet with us this evening. We hope this is the start of a great home/school partnership