

Welcome

Parents' Induction
Information Evening

2026





How do we judge success and impact?



Our daughter has only been at the school for Sixth Form, but we have been so impressed during her time there, by the excellent teaching, the level of organisation, and the way they have been guided through the uni application process. She has been so happy and is very sad to leave!



What have the students experienced this week?

- Welcome assembly
- Tutor time
- A variety of lessons
- The Study Café
- Social sports



What do our current students say about our ethos?

As a year 12 student

I believe that SWCHS sixth form represents:

- Hard work (It pushes me)
- Friendly environment (enjoyable)
- Helps me plan my future

The values here at the 6th form are very well set-out and value key qualities such as hard work, character and commitment which are invaluable in life beyond 6th form.

Ethos of sixth form

Hard work is valued, but it's all ~~to~~ to set you up for your own future not for the school's gain

It's competitive and hard-working but still friendly and fun.

Why here?

Academic excellence (voted amongst the very best state schools in SE England by the *Times*)

Fully comprehensive

A broad and rich curriculum (academic and pastoral)

Respect, equality and a firm sense of community

Development of the individual

PSHE 'Life Lessons' and 'Life Lectures'

Electives & the Student Bodies

Ofsted Comments: March 2024

Students in the sixth form are supported exceptionally well. Teachers have a clear understanding of what each individual student needs to do well, including those with SEND. They plan challenging activities to expertly build and develop students' knowledge and understanding. Students flourish under their teachers' expert care. They highly value their 'Life Lessons', which prepare them well for the future. The school ensures that students take on responsibilities and set up their own clubs, such as debating. Students achieve very highly.

A Level Results:

•Nationally, 9.4% achieved an A* grade and 28.2% achieved an A*-A grade.

Here at SWCHS:

- Over 100 grades were awarded at A* Level
- 44% of students achieved at least 1 A or A* grade.

	National	SWCHS
A*	9%	14%
A- A*	28%	34%
A*-B	54%	68%
A*-C	76%	88%
A*-E	97%	100%

Level 3 Results

Double	
D*D*	21%
D*D	36%
DD	50%
DM	64%
MM	86%
MP	96%
PP	100%

Single	
D*	17%
D	48%
M	86%
P	100%

Class of 2025: Where did they go?

6



6



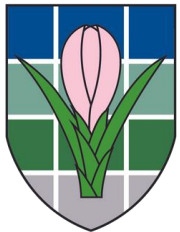
15



13



10



2

**Music
Conservatoire
Offers**

Total of
224 confirmed
University offers

& Apprentices to:



National Power



Who's
who in the
Sixth Form?



Mrs Anna Bendall– Deputy Director of Sixth Form

- Pastoral Lead for Y12

- Lead the Y12 collegiate and tutor team
- Monitor student behaviour and attendance and coordinate interventions
- Safeguarding

- Year Achievement Co-Ordinator

- Monitor academic progress for all Y12 students
- Progress Check data analysis and interventions
- Manage study support systems and hold parental meetings

abendall@swchs.net

Mrs Kirsty Jenkins – SENCO

Does your child require additional support in their learning?

- ✓ SEND
- ✓ Vulnerable
- ✓ LAC /PLAC
- ✓ Access Arrangements

- EHCP
- Assessment paperwork
- Diagnosis reports
- Form 8 or 9

kjenkins@swchs.net



Mr Josh Park—
Student Bursary
Co-ordinator

Apply in
September

To be included on
mailing list, e-
mail:

jpark@swchs.net



Dr Eleanor Wood
EPQ Co-ordinator

- What is the EPQ?
- Should my child be doing the EPQ?

ewood@swchs.net



A Level	AS Level	EPQ
A* = 56	-	A* = 28
A = 48	A = 20	A = 24
B = 40	B = 16	B = 20
C = 32	C = 12	C = 16
D = 24	D = 10	D = 12
E = 16	E = 6	E = 8

The Sixth Form Tutor



Transition
to Year 12

Independent
study

Exploring
choices

Future
decisions &
destinations
in Year 13

Making
applications

Future Planning: making informed choices

- Employability fairs
- CV feedback
- Rotary Interviews
- Work experience
- Alumni visits and talks
- Links with local providers
- Careers coaching
- Form the Future guidance meetings
- UCAS discovery Exhibition: Bedford University
- Nottingham Trent OR Nottingham University trips
- Oxford University
- UEA
- University Lincoln
- Royal Holloway University
- Taster workshops



Student Life

Week 1 and 2 model

9 hours per subject

Study
time 50% independent

Electives

Life lessons and
lectures

ALL on site
until Autumn half
term



Earned autonomy

For the first half of the Autumn Term students will remain on site for the entire day.

However, for students who receive a positive Progress Check in early October (called a Settling in Check) they will be given more freedom.

This could mean arriving late or leaving early, or going out for lunch (depending on their timetable).

Life Lessons and Lectures

- Year 12 life lessons are once a week (with their form tutor)
- Lessons are designed to enrich student knowledge beyond their academic studies looking at topics from driving, to careers, digital resilience, fertility, first aid and safety, and economic wellbeing.
- Year 12 life lectures are once a fortnight (guest speakers)
- Lectures are designed for students to be exposed to a variety of guest speakers, in a lecture style setting in preparation for University and the working world.

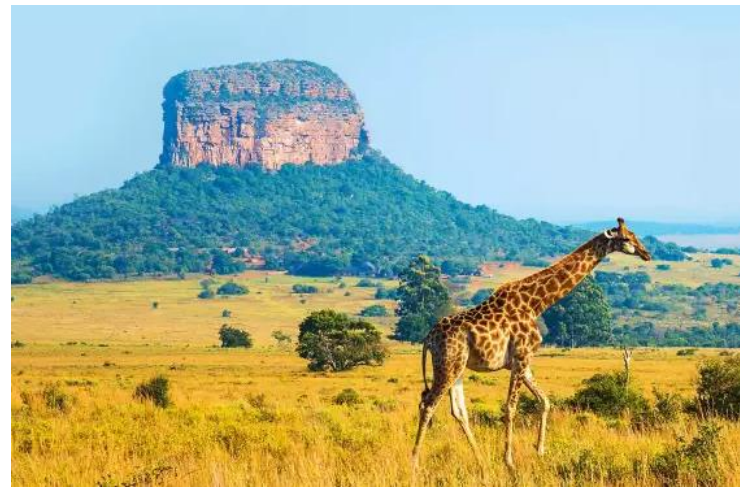


Caythorpe Court: Transition Trip

FRIDAY OCTOBER 2nd
SUNDAY OCTOBER 4th

- Approximate cost: £230
- Sign up on results day





Extra-Curricular Trips

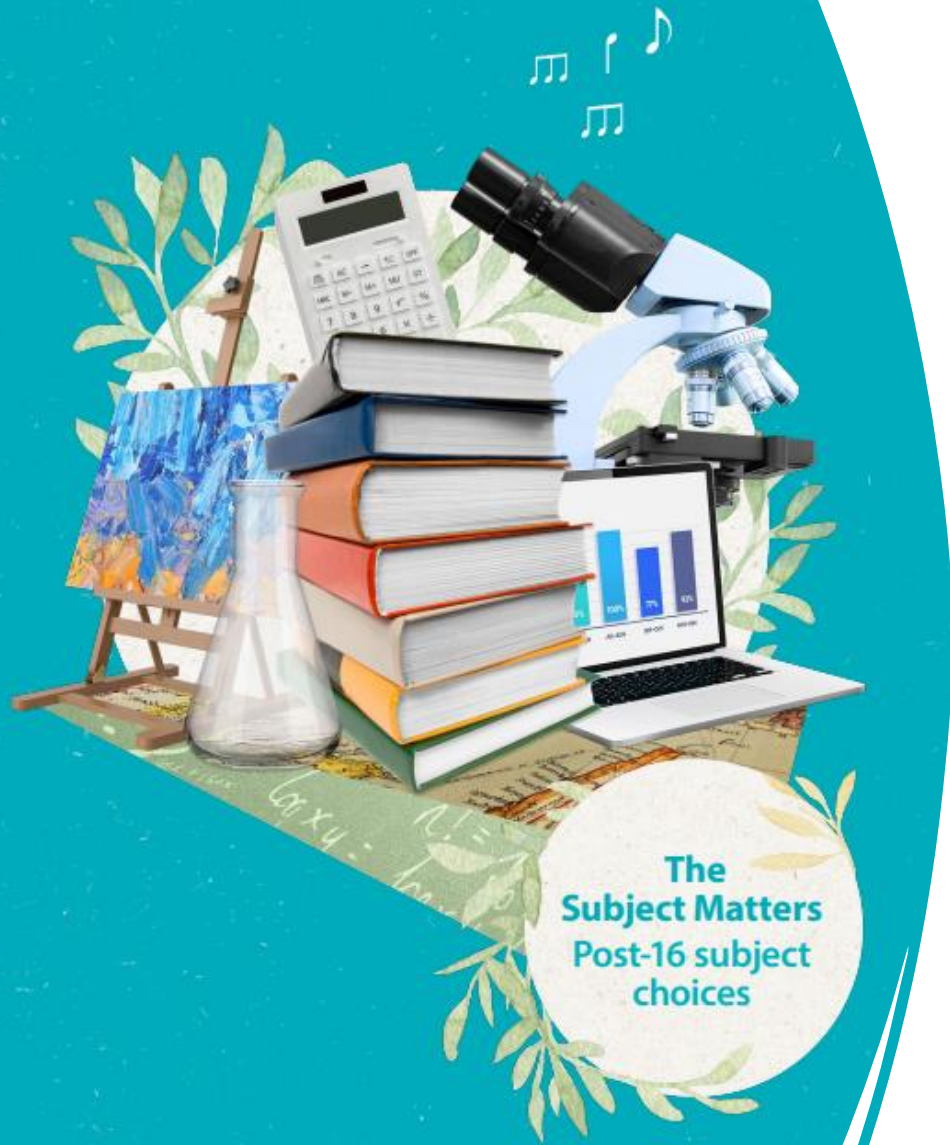
- South Africa (couple of spaces left)
- Duke of Edinburgh
- Music tour
- Sixth Form Ski Trip
- Geneva: United Nations (Easter holidays)



Super-Curricular Trips

- Tenerife (Geography/Geology)
- Field trips (Environmental Science/Spanish)
- Lecture Days - Economics
- Debating competitions
- The Old Bailey - Criminology
- Parliament – Politics
- Theatres – Drama
- Warner Bros. Studios – Film & Media
- University of Buckingham - Film
- Tower of London – History
- Model United Nations





Subjects Matter....



Subjectchange@swchs.net

Subject to eligibility and class size availability

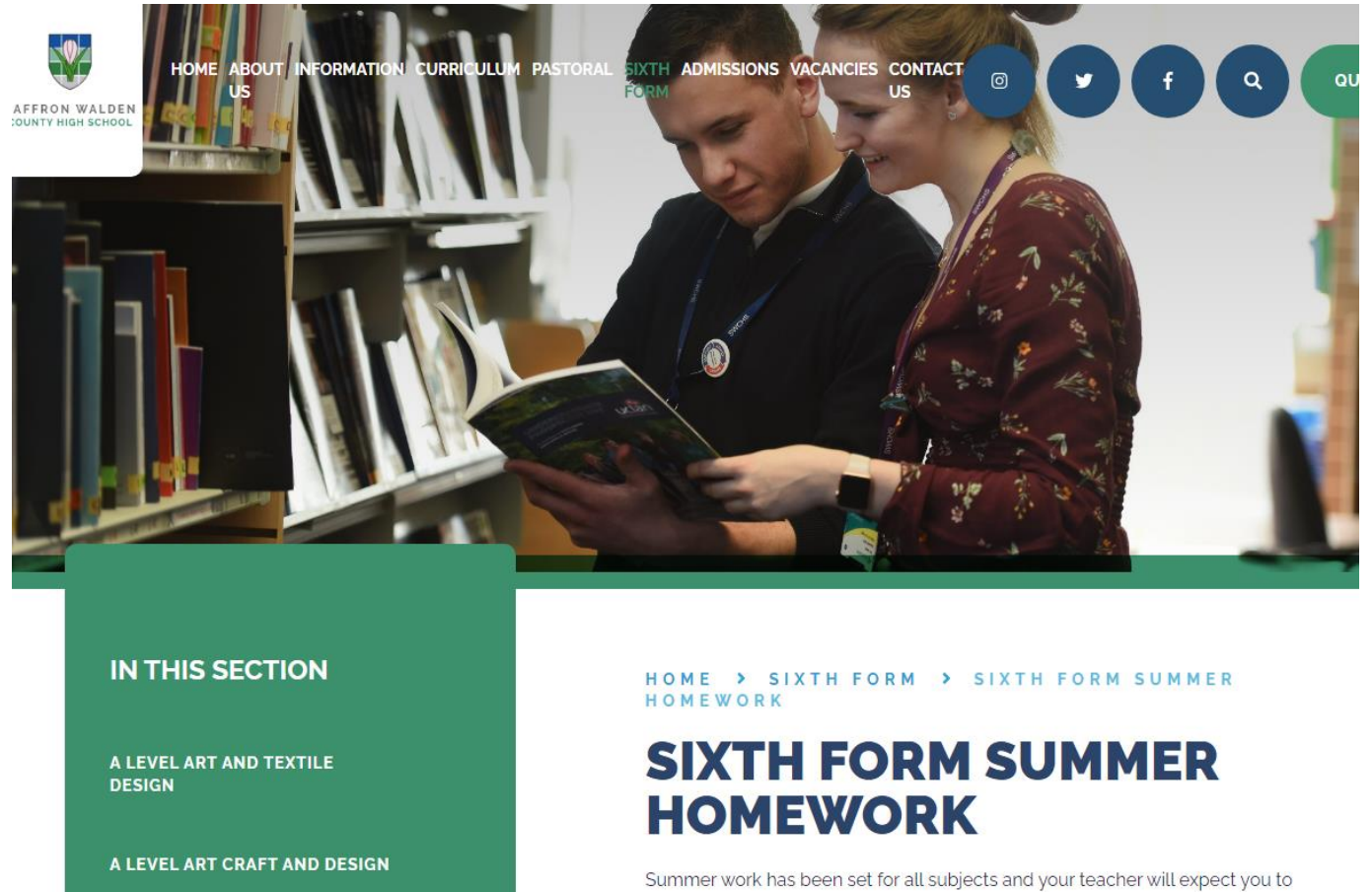


A NEW QUALIFICATION FOR WORK, STUDY & LIFE

- Level 3 qualification
- Same as an EPQ
- 1 year/ 7 hours a fortnight
- Real-life maths
- Valued by employers
- Reduced Uni Offers

Summer Work

- Check out the 'Getting Ready For...' guides
- Look at the curriculum maps
- Complete the Summer work



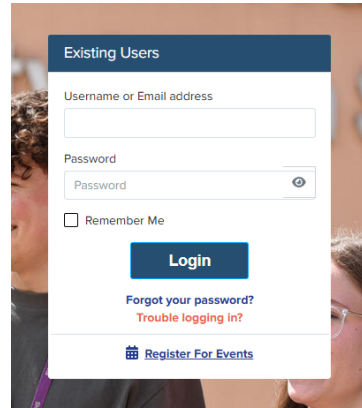
The screenshot shows the website for Affron Walden County High School. The header includes the school logo and navigation links: HOME, ABOUT US, INFORMATION, CURRICULUM, PASTORAL, SIXTH FORM, ADMISSIONS, VACANCIES, and CONTACT US. Social media icons for Instagram, Twitter, Facebook, and a search icon are also present. The main content area features a green sidebar with the heading 'IN THIS SECTION' and two links: 'A LEVEL ART AND TEXTILE DESIGN' and 'A LEVEL ART CRAFT AND DESIGN'. The main content area displays a breadcrumb trail: HOME > SIXTH FORM > SIXTH FORM SUMMER HOMEWORK, followed by the large heading 'SIXTH FORM SUMMER HOMEWORK' and a sub-heading 'Summer work has been set for all subjects and your teacher will expect you to'.



Securing Your Place: next steps



Log into to complete your enrolment form.



Existing Users

Username or Email address

Password

Remember Me

Login

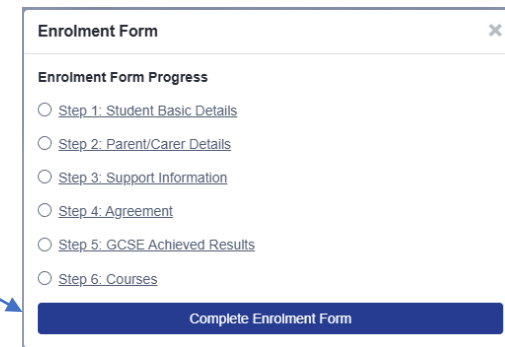
[Forgot your password?](#)
[Trouble logging in?](#)

[Register For Events](#)

Click on the next step of the process, 'Enrolment Form'



A pop up box will appear - Click the 'Complete Enrolment Form'



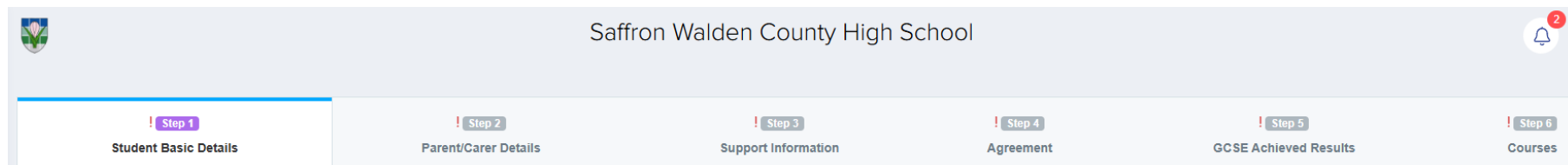
Enrolment Form

Enrolment Form Progress

- Step 1: Student Basic Details
- Step 2: Parent/Carer Details
- Step 3: Support Information
- Step 4: Agreement
- Step 5: GCSE Achieved Results
- Step 6: Courses

Complete Enrolment Form

Answer all mandatory questions in each step of the form.



Saffron Walden County High School

Step 1 Student Basic Details

Step 2 Parent/Carer Details

Step 3 Support Information

Step 4 Agreement

Step 5 GCSE Achieved Results

Step 6 Courses

Step 5: GCSE Achieved Results

Provide your achieved grades - *Upload a screenshot as proof (non SWCHS Students only)*

Step 6: Courses

Confirm your subjects


Previous Finish

Subject to enrol

✓ Maximum subjects to be selected: 5 ! Minimum subjects to be selected: 1

✓ Select class for **every selected subject**

Select the course you are interested in:

 [Search subjects here](#)

Course	Block A	Block B	Block C	Block D	Block E
A Level 3D Design & Architecture	A Level 3D Design & Architecture <input type="button" value="Select"/>	A Level 3D Design & Architecture <input type="button" value="Select"/>			
A Level Art and Textile Design			A Level Art and Textile Design <input type="button" value="Select"/>		
A Level Art, Craft and Design		A Level Art, Craft and Design <input type="button" value="Select"/>			
A Level Biology		A Level Biology <input type="button" value="Select"/>			A Level Biology <input type="button" value="Select"/>
A Level Business		A Level Business <input type="button" value="Select"/>		A Level Business <input type="button" value="Select"/>	
A Level Chemistry		A Level Chemistry <input type="button" value="Select"/>	A Level Chemistry <input type="button" value="Select"/>		A Level Chemistry <input type="button" value="Select"/>

Please click 'Submit Enrolment Form'

Enrolment form completed

Thank you for completing the relevant information. Once you have clicked on 'Submit Enrolment Form' below, our admissions team will review your grades and subject choices. You will receive an update by email once your place has been confirmed.

Please email admissions@swchs.net if you need any assistance

You have selected these subjects:

- A Level Business
- A Level Economics
- BTEC L3 Sport Dip (Double)
- L3 Cert Core Maths (AS Level)

The Sixth Form team will review your grades and subject choices.
You will receive an update by email once your place has been confirmed.



SWCHS Sixth Form – KEY INFORMATION



Lanyards must be worn every day!
These will be given on your first day

Enrolment Day: 20th August
You must enrol via Applicaa to secure your place



A link will be emailed to you
after Results Day.

Year 12
Transition Trip:
2nd-4th October



Y7-12	
08:40-09:40	P1
09:45-10:45	P2
10:45-11:00	BREAK
11:05-12:05	P3
12:10-13:10	P4
13:10-13:55	LUNCH
14:00-14:15	Tutor
14:20-15:20	P5

First Day:
Newcomers' day: Friday 4th Sept
All students: Monday 7th Sept

SUBJECT CHANGES:
subjectchange@swchs.net
In term time, please speak to your tutor.

Times for the school day.

Dress code: casual and
comfortable.

KEY CONTACTS:
Anna Bendall – Head of Year 12
abendall@swchs.net
Absence – must be reported each morning to:
6formabsence@swchs.net

Keep in touch!



swchs_sixth_form

Follow

Message

640 posts

1,391 followers

46 following

SWCHS Sixth Form

High School

Follow for regular updates, news and opportunities. www.swchs.net

www.sixthformsupport.com