

Welcome to Saffron Walden County High School

Ms Lankester
Headteacher





Mrs K Vanderpere-Brown
Assistant Headteacher
Director of Student
Achievement
KS3



Year 7 Pastoral Structure 202526

Safeguarding, attendance,
wellbeing and inclusion
Teams

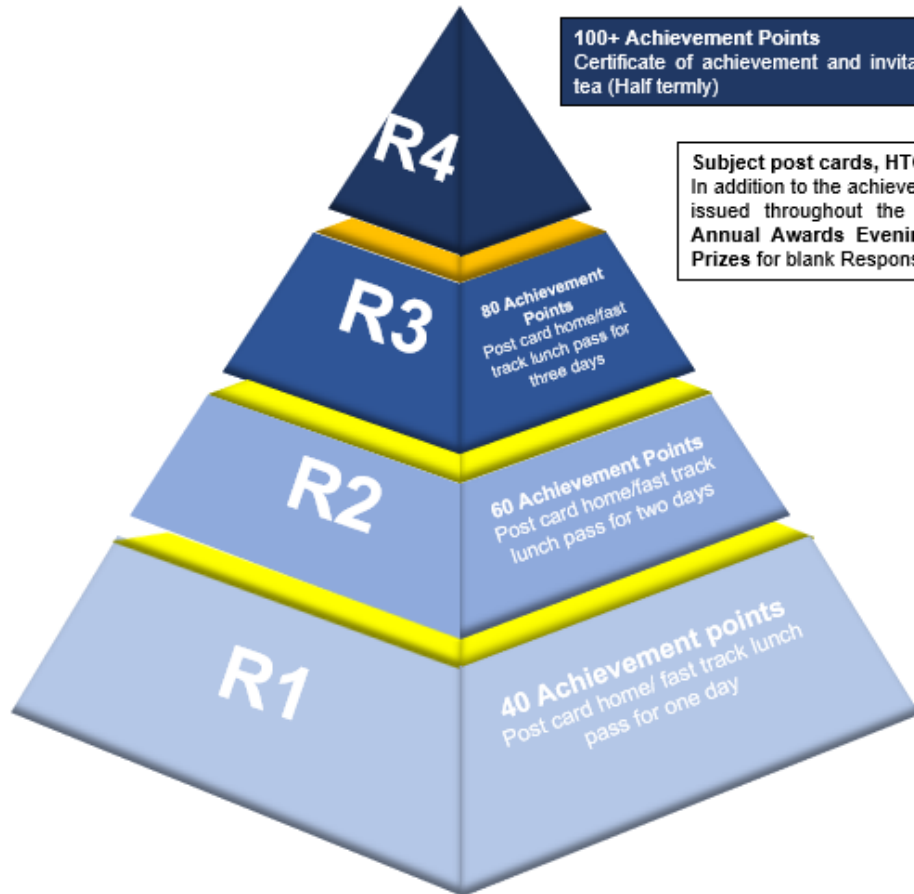
Senior Link – Katie Vanderpere-Brown

Year Team – Lauren Coates (YAC), Andrew
Osborne (DYAC), Vicki Parkes (SSO)

Form Tutor Team



Recognising Achievement at SWCHS



100+ Achievement Points
Certificate of achievement and invitation to afternoon tea (Half termly)

Subject post cards, HTC's, Awards Evening and Amazon Vouchers
In addition to the achievement point system, we also have Subject specific postcards issued throughout the academic year. Termly Headteacher's Commendations, Annual Awards Evening in the summer term and our Termly Amazon Voucher Prizes for blank Responsibility Cards.

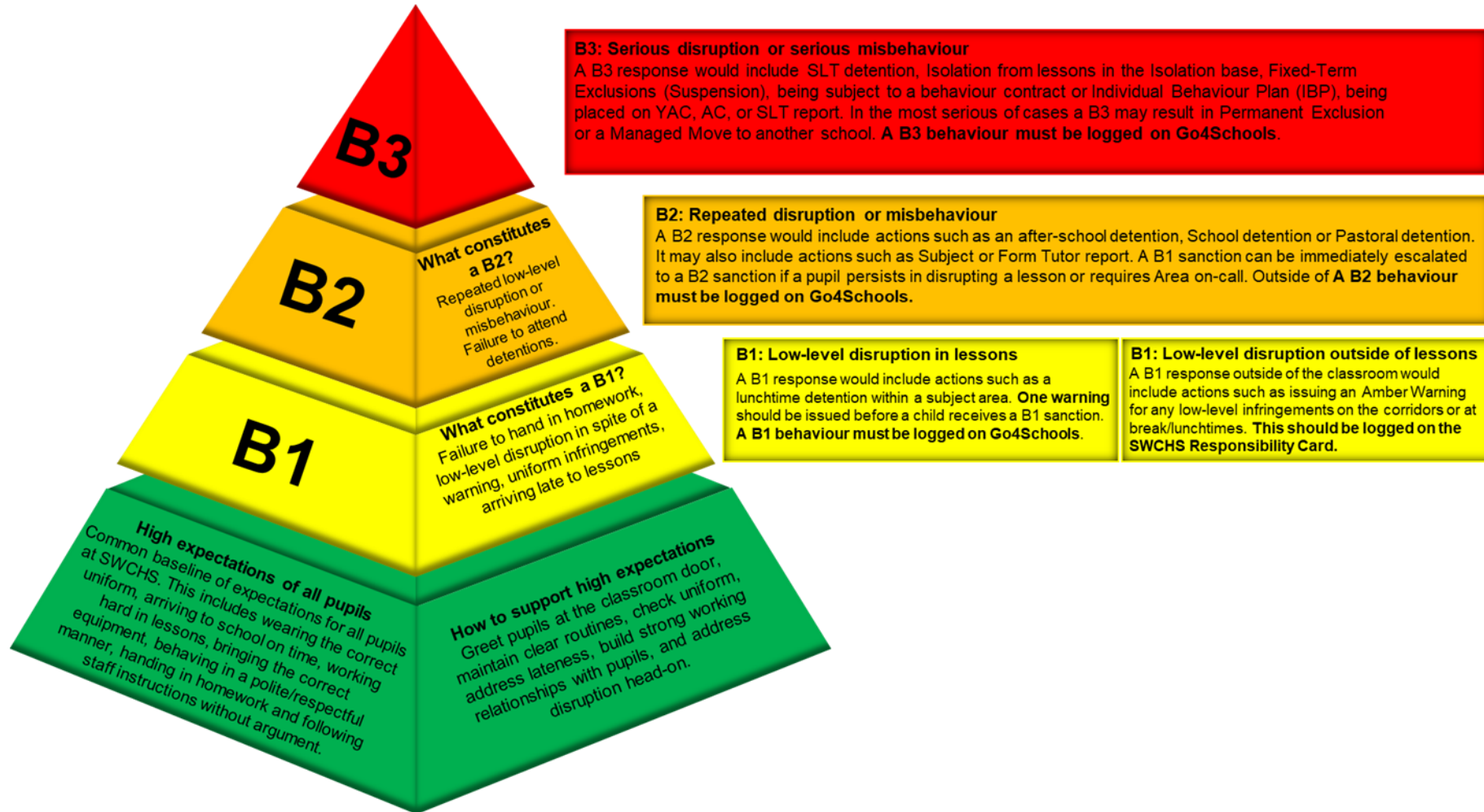
80 Achievement Points
Post card home/fast track lunch pass for three days

60 Achievement Points
Post card home/fast track lunch pass for two days

40 Achievement points
Post card home/ fast track lunch pass for one day



The SWCHS Behaviour Approach





Go 4 Schools

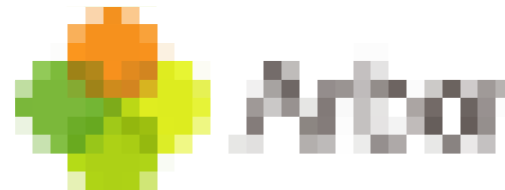
- Progress reports
- Timetable
- Achievement

Arbor

- Communication via home notes (weekly updates)
- Behaviour
- Payments



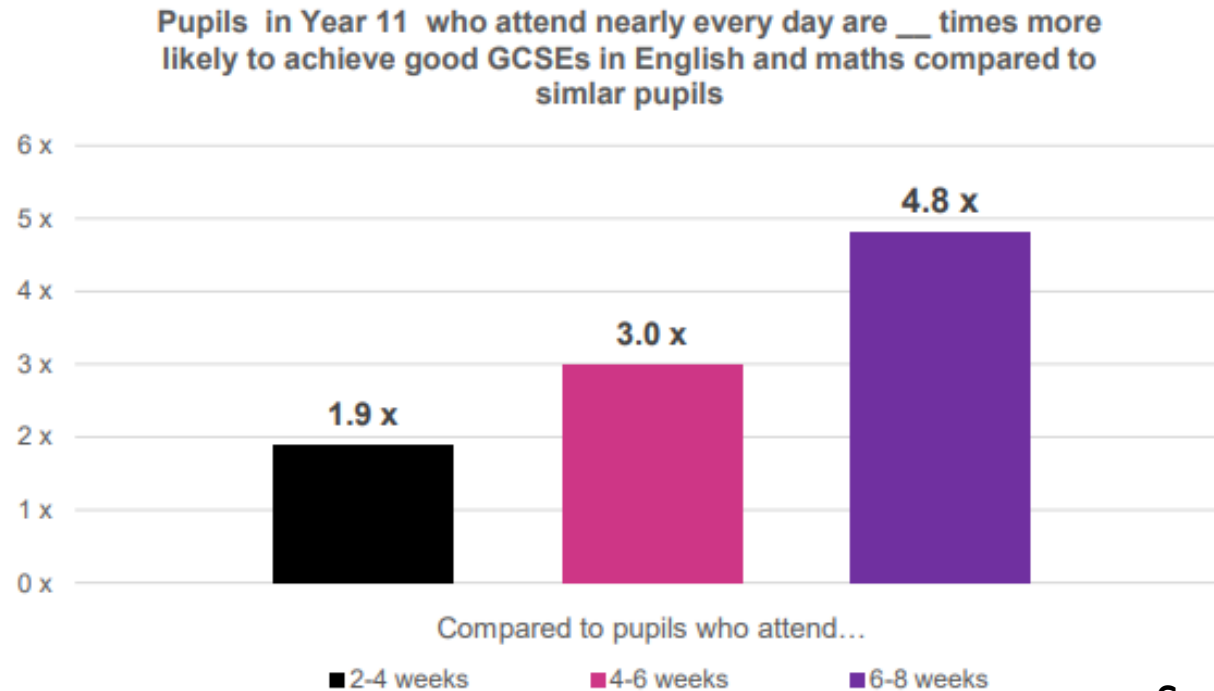
4 SCHOOLS



Attendance

Every extra week counts when it comes to attainment - so keep going

Students **attending over 95%** (up to 2 weeks missed) are **twice as likely to achieve grade 5 in English & Maths** than students **attending 90% of the time** (up to 4 weeks missed).



Source: DfE



Attendance

- We have an expectation that students will have attendance of better than 96%
- Persistent Absence – attendance lower than 90%
- We monitor attendance very closely and have a School Inclusion Officer
- Please complete a leave of absence form (LOAF) for any request for absence.
- Form tutors aim to call and check in on the first day your child is absent.

Parents must phone on each day of absence. If there are attendance concerns, medical evidence will be required for all absence to be approved





Uniform



<https://www.swchs.net/page/?title=School+Uniform&pid=26>



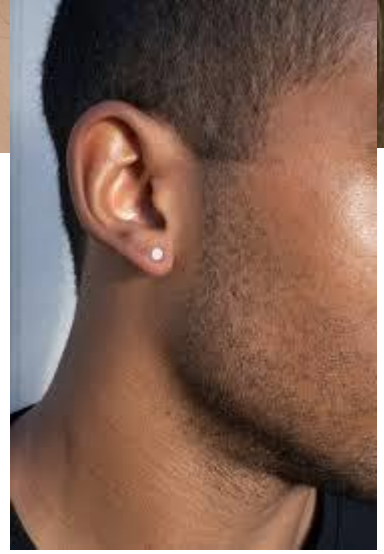


Uniform

Not permitted



Jewellery





Appearance

- We do not permit:
 - Unnaturally dyed hair
 - Nail varnish or acrylic nails
 - Multiple piercings or facial piercings
 - Fake lashes
 - Non-natural makeup
 - Rings
 - Bracelets
 - Eyebrow slits
 - Designs shaved into hair



huSH Pouches

- Students are not permitted to have access to mobile devices throughout the school day
- In order to achieve this they must have one of the following:
 - An exemption card from the year office – this means they do not bring a phone on site
 - A card showing they have handed their devices into the huSH desk
 - A huSH pouch, with devices locked inside – this is the best option!
- Pouches cost £15. Please look out for more information.





Communication with Students

- Microsoft Teams is a platform your child will use frequently:
 - Each class has a Team that your child will be a member of.
 - Homework is set as assignments and resources are posted in the Team.
 - Your child can message their teacher.
 - Each year has a Team for community posts from the year team.





Communication with Parents

- Parentmail– most common way of disseminating information as quickly as possible.
- Message via the School Office or via letter.
- The first point of contact for any pastoral issues should be the Form Tutor. It is their responsibility to deal with the daily issues affecting their form.
- Any subject specific issues should go via the subject teacher and or subject leader
- Email Year Office
at Year7office@swchs.net
- Meeting – by appointment only.

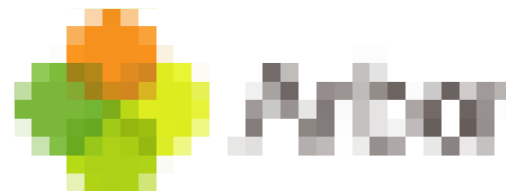




Arbor

Look out for log in details for our new MIS. Arbor will be used for payments and communication about achievement, attendance and behaviour.

If you have not given consent for your child to have their finger scanned, please let the year office know.





Year7office@swchs.net

Miss L Coates

Year 7 Year Achievement
Coordinator (YAC)

Mr A Osborne

Year 7 Deputy Year
Achievement
Coordinator (Deputy
YAC)

Mrs V Parkes

Student Support Officer
(SSO)





Year Team Support

Miss Coates (YAC), Mr Osborne (DYAC) and Mrs Parkes (SSO): Overview of academic progress & achievement as well as pastoral support.

Form Tutors: The first point of contact. They see the tutor group daily.

Form Groups: We have used the information provided by Primary schools & our many years of experience to create the form groups. These are balanced academically & pastorally to consider the needs of all of the students. They provide a fresh start and a chance to make new friends.



Year 7 Forms September 2026

Saffron Half

S1 7BXS Mrs B Shoard

S2 7JRS Mr J Simmons

S3 7LXH Mrs L Hayes

S4 7RMH Mr R Hancock

S5 7GG Mrs G Greenbaum and
Ms F Kaufhold

Walden Half

W1 7KJB Ms K Bates

W2 7NAC Mr N Chamberlain

W3 7PSF Mr P Facer

W4 7MEC Ms M Combes

W5 7JXD Mr J Duddy

Email for staff is always first initial followed by last name @swchs.net
For example: Mrs L Hayes becomes lhayes@swchs.net



Home and School in Partnership

“There is a powerful association between positive parental involvement and student achievement and attainment.

Parental involvement in the form of at-home interest and support is a major influence upon educational outcomes.”

DfE Research



In school we...

- Regularly and rigorously check progress
- Monitor and communicate around attendance
- Provide high-quality specialised teacher input
- Many classes will have additional support
- Provide rich extra-curricular activities and trips
- Give access to Homework Club
- Focus on developing character and independence



To support us we ask you to...

- Liaise with the school and **communicate concerns**.
- Help with **organisation and getting students into routines** – including sleep and hygiene over the summer holidays! **Your support is essential in the early days.**
- **SW(it)CH it off at 8pm.** We recommend that phones/electrical devices are not used after this time or in pupil's bedrooms. If we all do this and work together it makes life easier.
- Be **aware of your child's online activities and gaming** – check they are age appropriate.
- **Support the professional judgements** of staff at SWCHS. If in doubt, contact us do not post on social media.



Supporting with Organisation

- Our timetable is over a two week cycle (week A, week B). The Term Dates document on the school website helps you to check which week we are on.
- Students have 5 lessons a day ie 50 lessons a cycle.
- This is made up of a broad curriculum of subjects, taught in mixed ability groups for most classes.

Lesson	Time
Period 1	8:40 – 9:40
Period 2	9:45 – 10:45
Break	10:45 – 11:00
Period 3	11:05 – 12:05
Period 4	12:10 – 1:10
Lunch	1:10 – 1:55
Registration / Assembly	2:00 – 2:15
Period 5	2:20 – 3:20



Key Stage 2 Data

- We have received official data about students from primary schools to support transition.
- We will also collect our own data through:
 - Baseline subject assessments
 - Year 7 CATs
 - Year 7 Reading tests
 - Year 7 Maths tests



Organisation

Every Day

Handwriting Pen
Pencil Case
Green Pen
Whiteboard pen
Lunch / snack /
Homework Tasks
Correct exercise books
Water bottle
Locker Key
Responsibility Card
hush pouch

Some Days (check TT)

PE Kit
Musical Instrument
Ingredients for Food Technology
(on rotation)



Please label
EVERYTHING



Homework

- Students will be set homework in core subjects, languages.
 - In addition, guided reading will be set by all subjects throughout the year
-
- Up to 90 mins per fortnight for Maths
 - Up to 60 min reading per fortnight for English
 - Up to 30 mins per fortnight for Science
 - Up to 30 mins per fortnight for Languages
 - Up to 60 mins of Guided Reading
 - Up to 30 minutes additional homework from another subject
 - This equates to up to **5 hours per fortnight**

Support for homework is available in the learning centre after school



Reading

Students should aim to read at least 5 times a week, for 20 minutes.

Please help us to ensure this happens by signing the Year 7 Reading Record.

Student reading skills continue to develop after primary school. Reading:



Boosts imagination and creativity



Improves vocabulary and language skills



Helps focus and concentration



Helps students learn about new places, people, and ideas



Is a great way to relax and reduce stress



Pupil Premium Grant

- A grant based on information from DfE & Primary schools to support the learning of students who:
 - are eligible for Targeted Free School Meals
 - have received them at some point in the last six years
 - are looked after (Children In Care)
 - are adopted
 - have a parent who is in the services
- Support available to PPG students:
 - uniform bursary
 - music / Drama lesson support
 - financial support with trips
 - financial support with educational resources

You must reapply for Free School Meals from the 1st of August 2026. See Essex County Council Website for more details.



Extended Free School Meals

- The Department for Education has announced expanded eligibility for free school meals. It is anticipated that, nationally, over half a million additional pupils will become eligible under the new criteria.
- Under these changes, all households receiving Universal Credit—regardless of the current £7,400 income cap—will qualify for this support.
- This new category will be known as Expanded Free School Meals (EFSM). Funding for EFSM covers free meals only and does not include additional Pupil Premium discretionary support.
- If you believe you qualify for EFSM, please apply via Essex County Council:
<https://www.essex.gov.uk/schools-and-learning/schools/free-school-meals>

If you think your child is eligible but you haven't had any information, please see one of us this evening. Please claim for EFSM if you're eligible!



Young Carers

Young Carers provide unpaid help and support to a family member, who may not be able to manage without their support due to an illness or disability, whether physical or mental.

Research suggests that there are up to five Young Carers in every classroom.

Being a Young Carer may look like:

- Missing school activities or skipping weekend plans because of taking a parent to a hospital appointment.
- Taking responsibility for the cooking/washing up at home, because a neurodivergent sibling requires more parental attention.
- Stepping in to calm your sibling down when their anxiety attack begins, or being the only person who can talk a family member through a period of depression.



Young Carers

Young Carers may need extra support to enjoy and excel at school, and we are committed to ensuring that they are identified and supported effectively.

As outlined in our policy, our aim is to provide an informed and flexible provision for every Young Carer, to ensure inclusion, equity, and achievement.

Support available to Young Carers:

- Designated Essex Young Carer Key Worker
- Access to our Lunch club, on a Monday
- Teacher awareness to access in-class support
- Tutorials and check-ins from the Deputy YAC and Young Carer Lead

**If you think
your child may
be a Young
Carer, please
contact Katie
Bates (Young
Carer Lead)
[kbates@swchs
.net](mailto:kbates@swchs.net)**





cmeichen@swchs.net

Miss C Meichen
Key Stage 3 SENCO



SEND Provision at SWCHS

"Assisting students to become independent and courageous learners is a key aim. Ensuring that they leave school with the necessary skills to be independent, including academic skills, is key to the success of our students."

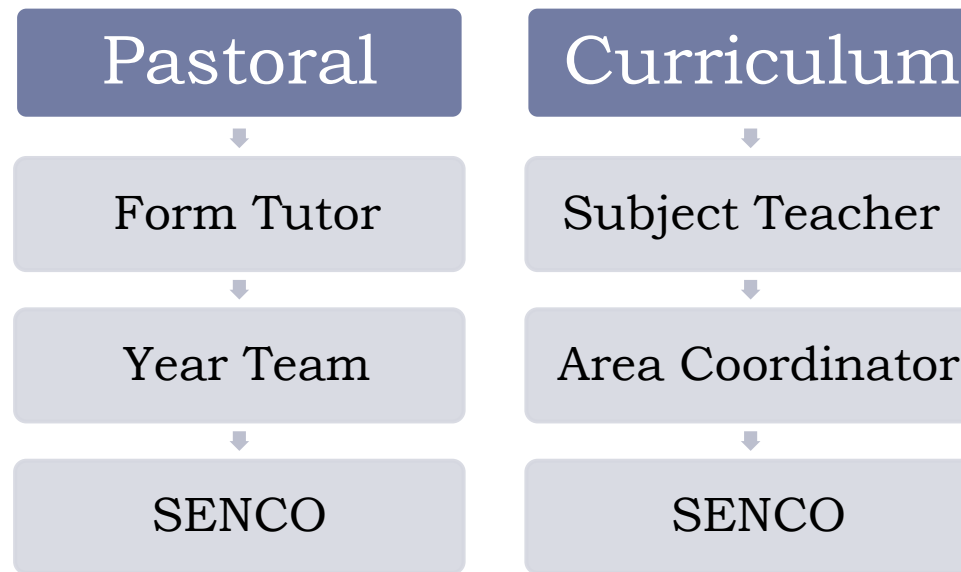
Our Department

- Four SENCOS, a Deputy SENCO and three Lead TAs
- Our TAs are based in subject areas
- TAs plan with teachers termly. This planning is what you may know as a One Plan.
- Long- or short-term support, needs led system
- Communication is key



Good Communication

It is better to contact us early with a small issue, rather than wait until it becomes a huge problem.



France 2027



France 2027

- In June 2027, all students will have the opportunity to travel to France for a day
- The trip is part of our commitment to ensuring that our students are offered opportunities and gain a rich cultural capital during their time at secondary school
- The trip is designed to give students the opportunity to travel with their peers and teachers to experience visiting a foreign country



Proposed Itinerary

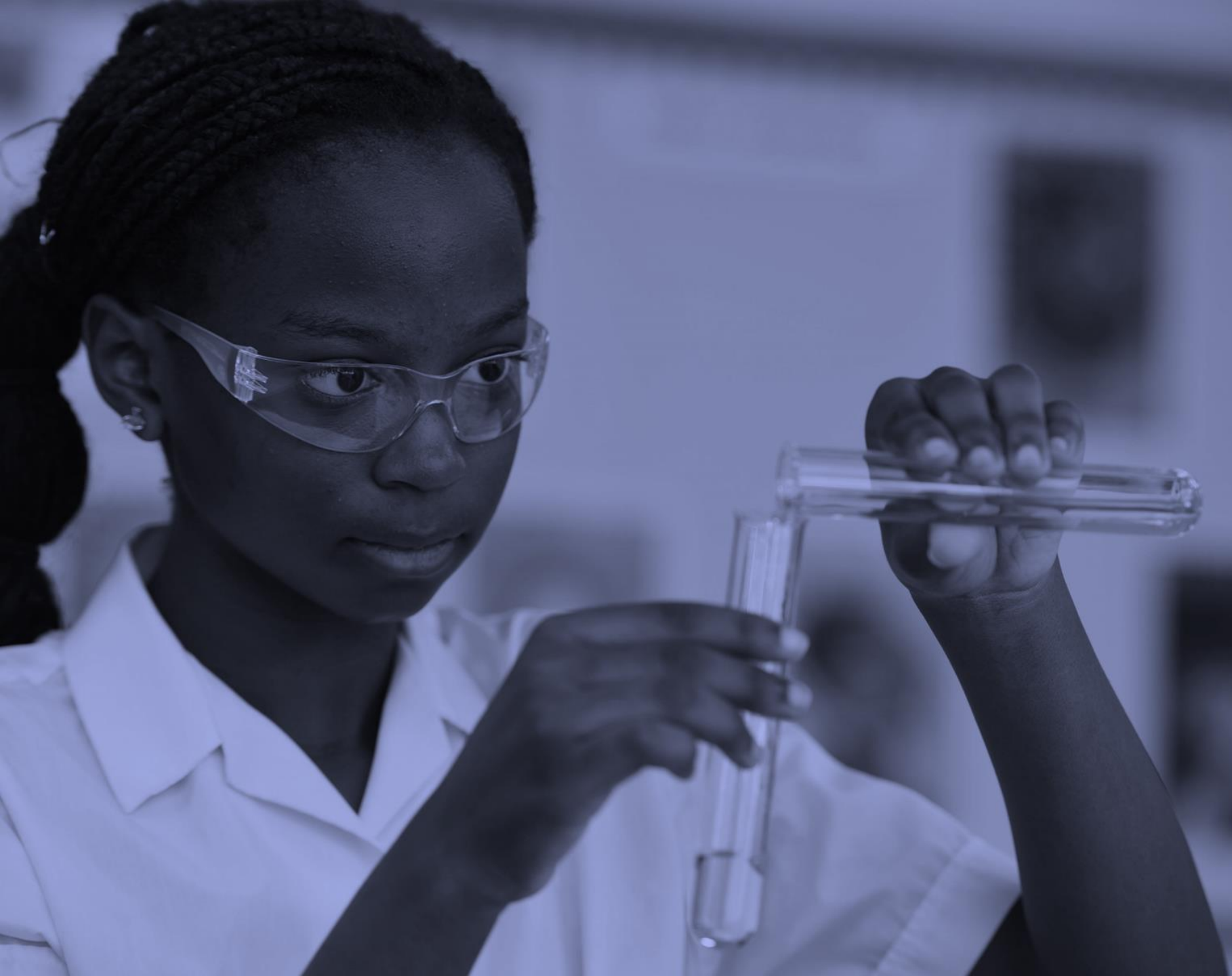
- Depart school in the early morning and board the coach.
- Arrive at Dover and board a ferry crossing to Calais – students have time to explore the boat and get some breakfast.
- Travel by coach from Calais to a local bakery. At the bakery, they will learn how to make croissants or baguettes in an immersive French experience. Students are also provided with a lunch.
- Students then travel to the nearby Boulogne Sur Mer, where they explore the old, fortified city and have a chance to grab a treat and practise their French in shops.
- A final stop off at a French supermarket to grab dinner.
- Students return home on the Euro Tunnel and arrive back at school in the evening.



Estimated Costs

- Depending on final numbers, the estimated total cost for this trip is £160
- The cost of the trip will be spread out over five monthly payments (NB not December)
 - **£32 in October**
 - **£32 in November**
 - **£32 in January**
 - **£32 in February**
 - **£32 in March**
- To support those who want to go, there will be a number of full bursary funded places, and some half price bursary funded places.
- We also consider support with obtaining a passport (which is required by March 2027)
- More information will be included in the trip letter in September.





Ms Lankester
Headteacher



Supporting Our Students: Why Your Donations Matter

Saffron Walden County High School Trust
(Registered Charity No. 298343)



More choice and space at lunchtime:



- Support for an outdoor classroom area for the Agricultural Science Unit
- Funding to put in an improved 6th Form Café
- Support for a second outdoor Café “Pod”
- Support for the Cricket Nets



Not just big projects

In these times of challenging school funding, we really do need to raise money to cover some of the basics

What else has the Trust supported recently?

A lighting Desk for Drama; cameras and tripods for Film and Media.

Visualisers and new screens for Humanities, English and Science classrooms

New textbooks for Spanish, French, German, Geography, History and Social Science.

Lighting boxes for Graphics and equipment for Maths

Educake on-line HW platform and on-line Languages support

Support for Science experiments

Table Tennis Tables for PE

Resources and workshops for Art

And outside the classroom

Support
for discretionary free
school meals

Support for well-
being provision

School funding
is under pressure

And funding in Uttlesford is some of the lowest in the whole country.

This makes support
from parents more
crucial than ever

On-going
support for
subjects



Enhanced
training to
support staff
to teach
reading



New floodlit astro for hockey and football





Donate to SAFFRON WALDEN COUNTY HIGH SCHOOL

Donation amount

One-off

Monthly

£

GBP ▼



Upgrade to a regular donation to help your charity make a bigger impact.

[Set up a monthly donation today.](#)

Hide donation amount from public view

Continue

DONATE WITH CONFIDENCE



No platform fees for charities



100% secure payments



Excellent on Trustpilot

With thanks to...



Saffron
Building Society

ContamacTM

Student drop off and pick up

- We do not permit drop-off/pick up before/after school on site
- Barrier at front of school operational before and after school
- Students with SEND requiring Access Arrangements can apply using the form in the SEND section of the website
- Parents/carers cannot walk into school to collect at the end of the day
- Please make arrangements to drop off/pick up elsewhere (not on main road, not in Copperfields – we'd recommend Swan Meadow car park)
- Barriers open (and Sport Hall gate open) from 4:30 (for clubs etc)



And finally....



- ▶ This presentation will be saved in the Year 7 area of the school website.
- ▶ You will receive all key dates within your welcome letters
- ▶ We will respond to any general questions now. If you have any questions relating specifically to your child, please see staff at the end.
- ▶ Thank you for taking the time to come in and meet with us this evening. We hope this is the start of a great home/school partnership