



WELCOME TO THE YEAR 11 AHEAD EVENING

**Year Achievement Coordinator (YAC):
Mrs Bronwen Fox**

**Deputy YAC:
Miss Fiona Muir**

**Student Support Officer (SSO):
Mrs Kirsty Yarrow**

Year 11 has finally arrived!



SWCHS Curriculum: what do we aim to see?



All students making great progress



All students achieving outcomes that make them proud



All students enjoying their learning and feeling inspired about their future choices

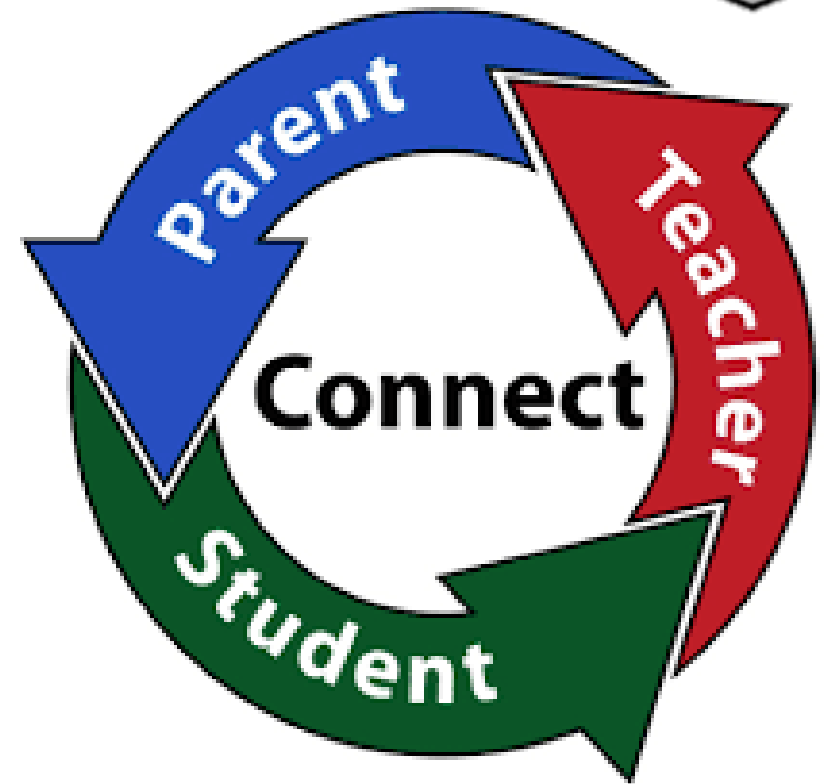


All students being prepared for life after SWCHS

A team effort...



- There is a powerful association between parental involvement and student achievement and attainment.
- Parental involvement in the form of at-home interest and support is a major influence upon educational outcomes.
- We're in this together! The home-school partnership is crucial if we are going to help students.
- We all want the same thing! We want our children to achieve their personal best.



How you can support at home...






- Students in Year 11 are expected to spend between 12 and 16 hours per cycle on homework or revision.
- Year 11 have long summer holidays once their exams are over. As families, you need to expect that your child does independent study during school holidays this year.
- Take time to review progress checks and assessment results with your child as they go through Year 11, this will help you pinpoint areas for development.
- Contact subject staff or the form tutor in the first instance if you have any concerns.
- **Mock exams:** November 2023 and January 2024. The outcome of these will inform forecast grades for post-16 providers.

Attendance



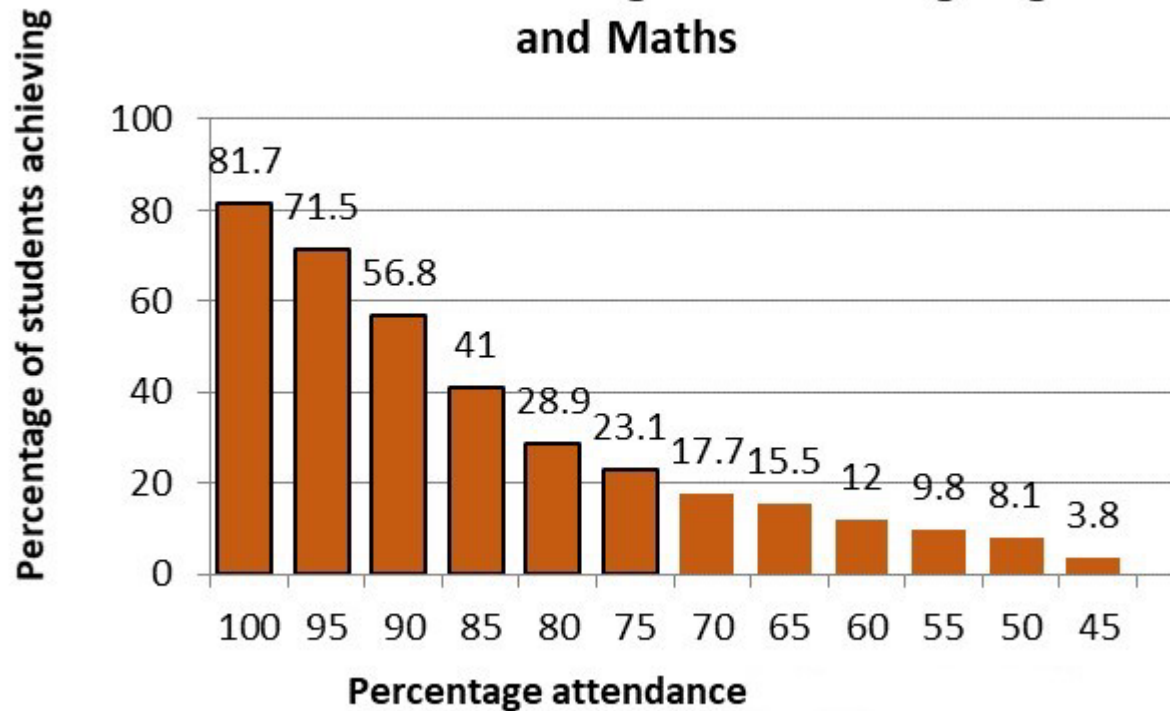
Your child needs to aim for **96%** attendance! This will ensure that you make the progress you need!

Non-school days:	Approx. 175 non-school days per year 175 days to rest, spend on visits, holidays, and appointments.					
Number of days absent:	0 days absence	10 days absence	19 days absence	29 days absence (half a term missed)	38 days absence	47 days absence
Number of days in school:	190 days of school	180 days of school	171 days of school	161 days of school	152 days of school	143 days of school
Learning hours lost	0 hours lost	37.5 hours lost	95 hours lost	142.5 hours lost	190 hours lost	290 hours lost
Attendance (%):	100%	96%	90%	85%	80%	70%
Summary:	GOOD: Best chance of success! Well done! 		WORRYING: Impact upon educational progress. Missing key content and developmental opportunities. 		SERIOUS CONCERN: Significant impact upon educational progress and development. Legal action, including Fixed-Penalty Notices (FPN), may be issued by the Essex Attendance Compliance Team 	

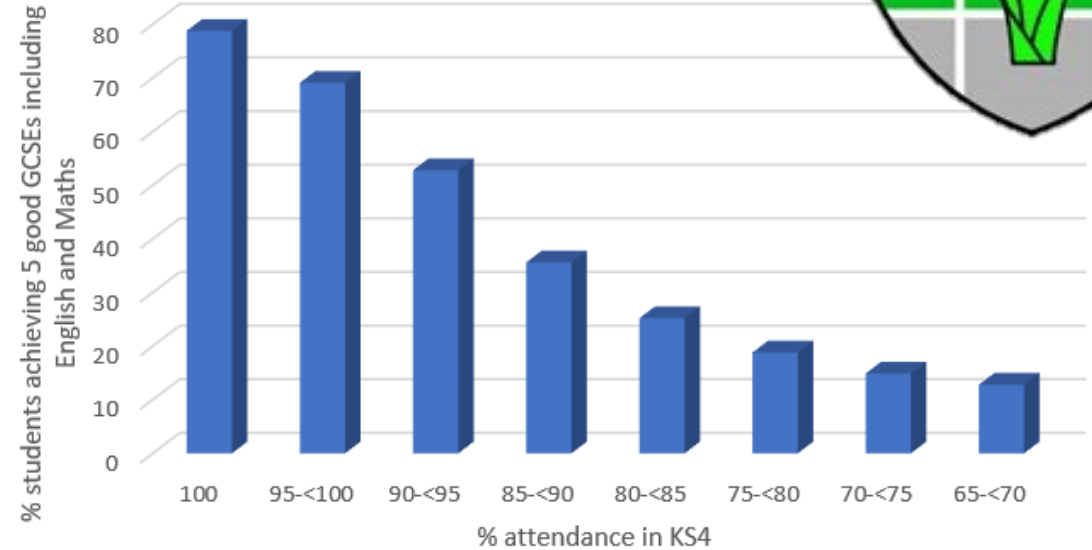
Attendance



Chances of 5+ GCSE 5-9 grades including English and Maths



GCSE Grades and Attendance



National data from 2013-14 school year (latest available)

How can we work together to support attendance?

- Positive narrative
- Work together
- Staying home/avoidance isn't an option
- School nurse/a Wellbeing Shed/ Pastoral Hub



Key Dates

- Progress Checks published late **October 2023** and **February 2024**.
- SWCHS Sixth Form open evening – **18th October 2023**
- Deadline for Sixth Form Applications – **29th November 2023**
- Mocks will take place **13th-20th November 2023** and **9th-19th January 2024**
- Sixth Form guidance discussions will take place in **February 2024**
- Public exams are from **9th May-26th June 2024** and study leave will commence on **4th June 2024**
- Yr11 Prom **4th July 2024** (as a guide only, last Year 11 book cost £15 and the ball £45. It is possible that the costs will increase for 2024)
- If anyone has any connections regarding a disco, photographer, food vans or any offers of help, please email kyarrow@swchs.net

SWCHS Behaviour Approach



**Recognising
effort and
achievement!**

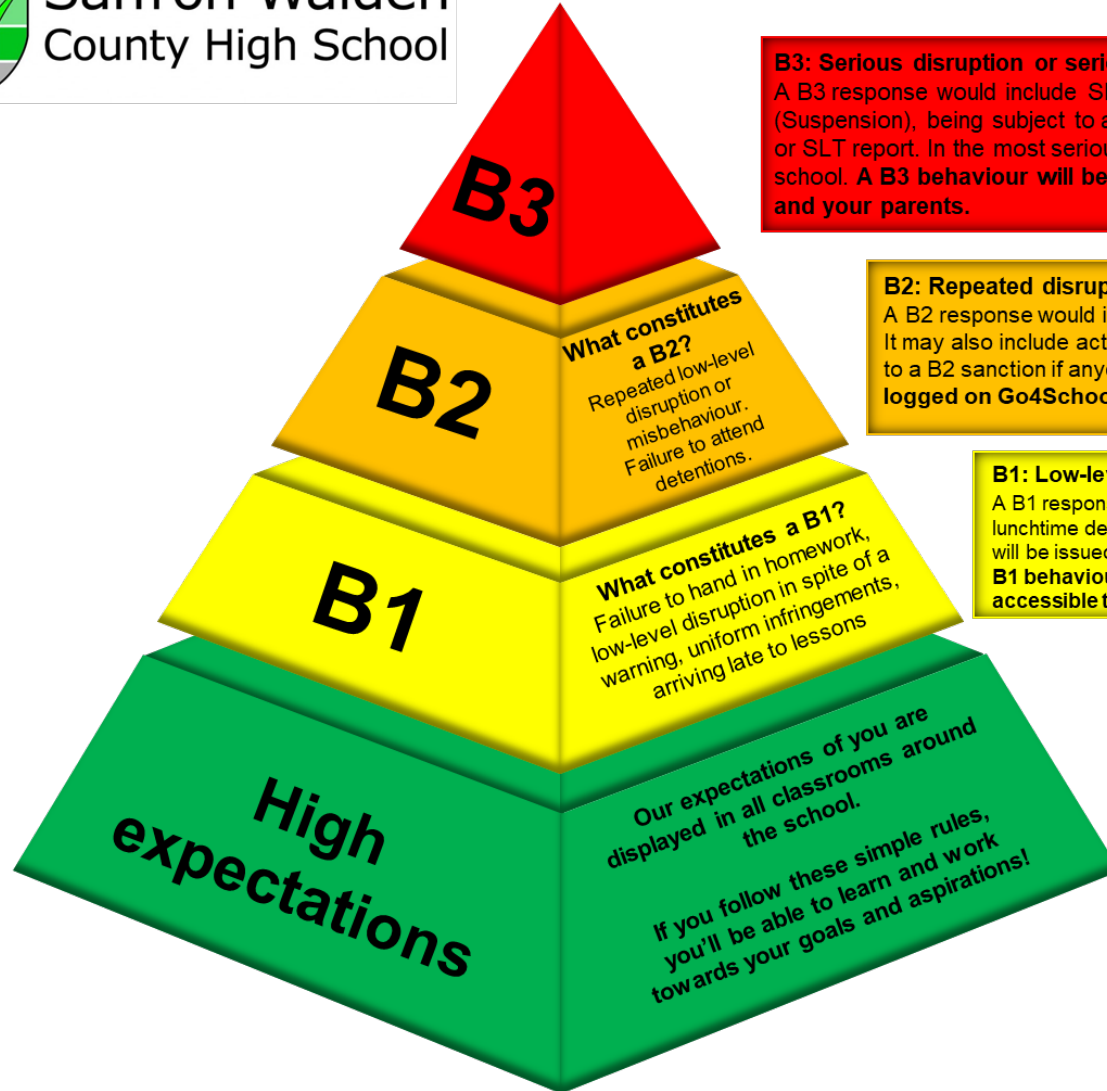


4 SCHOOLS

The SWCHS Behaviour Approach



Saffron Walden
County High School



What constitutes a B2?
Repeated low-level disruption or misbehaviour.
Failure to attend detentions.

What constitutes a B1?
Failure to hand in homework, low-level disruption in spite of a warning, uniform infringements, arriving late to lessons

Our expectations of you are displayed in all classrooms around the school.

If you follow these simple rules, you'll be able to learn and work towards your goals and aspirations!

B3: Serious disruption or serious misbehaviour

A B3 response would include SLT detention, Isolation from lessons in the Isolation base, Fixed-Term Exclusions (Suspension), being subject to a behaviour contract or Individual Behaviour Plan (IBP), being placed on YAC, AC, or SLT report. In the most serious of cases a B3 may result in Permanent Exclusion or a Managed Move to another school. A B3 behaviour will be logged on Go4Schools and accessible to Mr Blayney/Mr Singh, your YAC, and your parents.

B2: Repeated disruption or misbehaviour

A B2 response would include actions such as an after-school detention, School detention or Pastoral detention. It may also include actions such as Subject or Form Tutor report. A B1 sanction can be immediately escalated to a B2 sanction if anyone persists in disrupting a lesson or requires Area on-call. A B2 behaviour will be logged on Go4Schools and accessible to your YAC, and parents.

B1: Low-level disruption in lessons

A B1 response would include actions such as a lunchtime detention within a subject area. **One warning** will be issued before a child receives a B1 sanction. A B1 behaviour will be logged on Go4Schools and accessible to your parents.

B1: Low-level disruption outside of lessons

A B1 response outside of the classroom would include actions such as issuing an Amber Warning for any low-level infringements on the corridors or at break/lunchtimes. This will be logged on the SWCHS Responsibility Card.

Achievement Points 2023/2024

100+ Achievement Points

Certificate of achievement and invitation to afternoon tea (Half termly)

R4

R3

80 Achievement Points
Post card home/fast track lunch pass for three days

Achievement Points
Home/fast track two days

nt points
ast track lunch one day

Last year, our year group achieved over 18,165 positive points against 3234 negative points!

Subject post cards, HTC's, Awards Evening and Amazon Vouchers

In addition to the achievement point system, we also have **Subject specific postcards** issued throughout the academic year. **Termly Headteacher's Commendations, Annual Awards Evening** in the summer term and our **Termly Amazon Voucher Prizes** for blank Responsibility Cards.

Rewards

40 ACH points 1 day lunch pass

60 ACH points 2 day lunch pass

80 ACH points 3 day lunch pass

100+ ACH points Certificate and afternoon tea for

150 ACH Postcard

200 ACH points Certificate and second afternoon tea

250 ACH Postcard

Recognising achievements

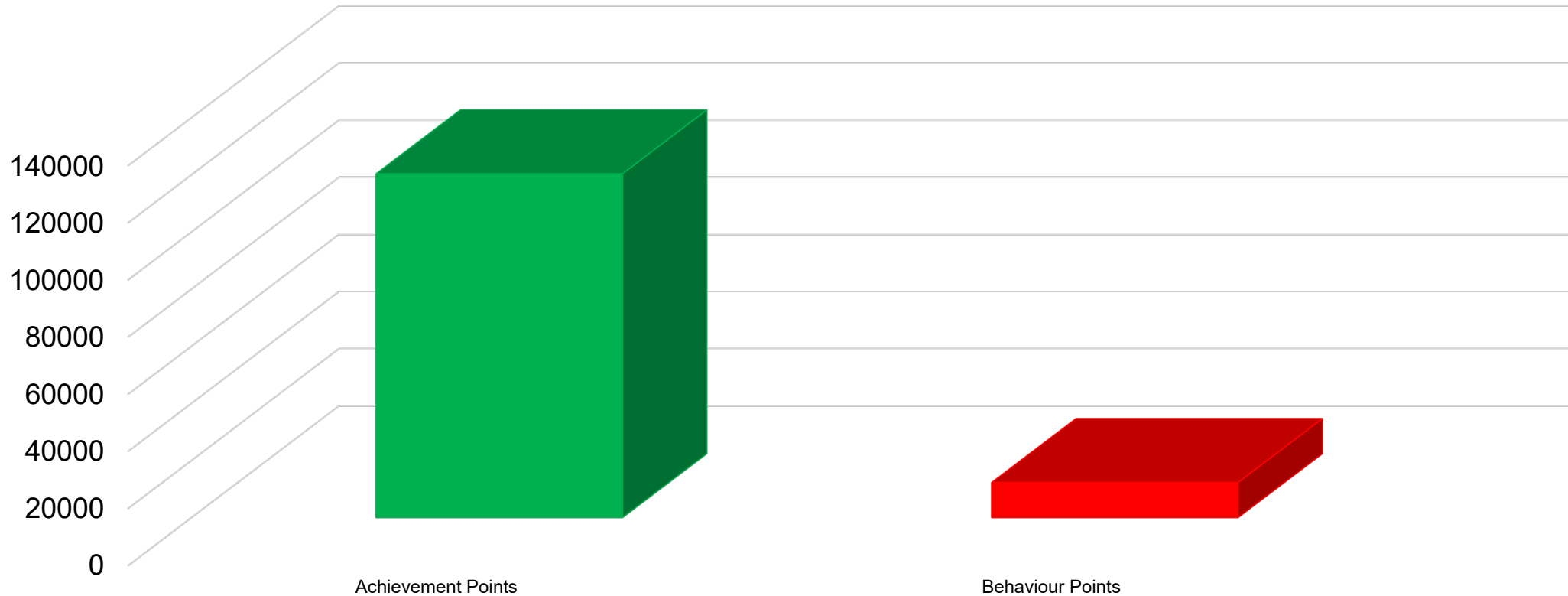
We have lots of ways to reward your children for their hard work at SWCHS including:

1. **Achievement Points:** Awarded for great work in class.,
2. **Postcards Home:** Sent by teachers as a 'well done'.
3. **Headteacher's Commendations:** For outstanding work.
4. **Acts of Kindness badges:** For acts of kindness around the school.
5. **Awards Evening:** A high profile awards evening with food and entertainment.
6. **Amazon voucher prize draw:** For those with a clean Responsibility Card!



Well done to you and your children!

Achievement Points and Behaviour Points for 2022-23 (Year 7 to 11)



Total Achievement Points for 2022-23

120,297

Total Behaviour Incidents for 2022-23

12,246



What do you think the average (modal) number of B codes is for a child at SWCHS?

0 or 1*

*Depending on the year group

The Safeguarding Team



Matt Blayney, Designated Safeguarding Lead (DSL) and PREVENT Lead



Sharon McCormick, Deputy Designated Safeguarding Lead (DDSL), Domestic Abuse lead, and CE Lead



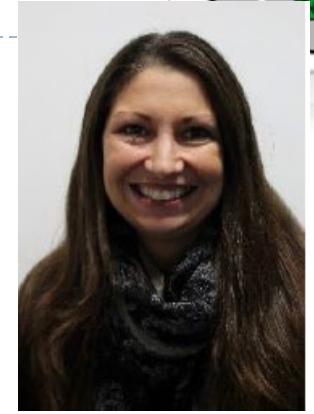
Paul Singh, DDSL and Online Safety Lead



Katie Pieri, Safeguarding Team and CIC Lead



Beth Robertson, Safeguarding Team and Lead Counsellor



Jo Chapman, Safeguarding Officer for Sixth Form



Anna Moorhouse, Designated Mental Health and Wellbeing Lead



Anna Bendall, Safeguarding Sixth Form



Sarah Dignasse, Safeguarding Governor/Chair of Governors

Safeguarding:

Members of this team meet weekly to triage and assess safeguarding cases and reports. We work hard to ensure that we inform parents of any safeguarding concerns relating to their child as soon as possible.

Safeguarding considerations for parents of Year 11

- **Parties:** As children move through Year 11, house parties begin to take place. Please ensure that if you are hosting a house party for Year 11s that an adult is in the vicinity to ensure children remain safe.
- **County Lines:** County Lines gangs are operating in Saffron Walden. They try to recruit children in the area to transport drugs such as cannabis. Please consider the length of time that you allow your child to remain out for, especially in the evening.
- **Vaping:** We are concerned about some children's access to vape pens and subsequent nicotine addiction. Please keep an eye out for these. **A 2% vape contains the same amount of nicotine as 40 cigarettes.**

Information and support



If you need information or support, please contact us directly! We are always happy to work with parents and discuss questions, issues, or concerns where they arise!

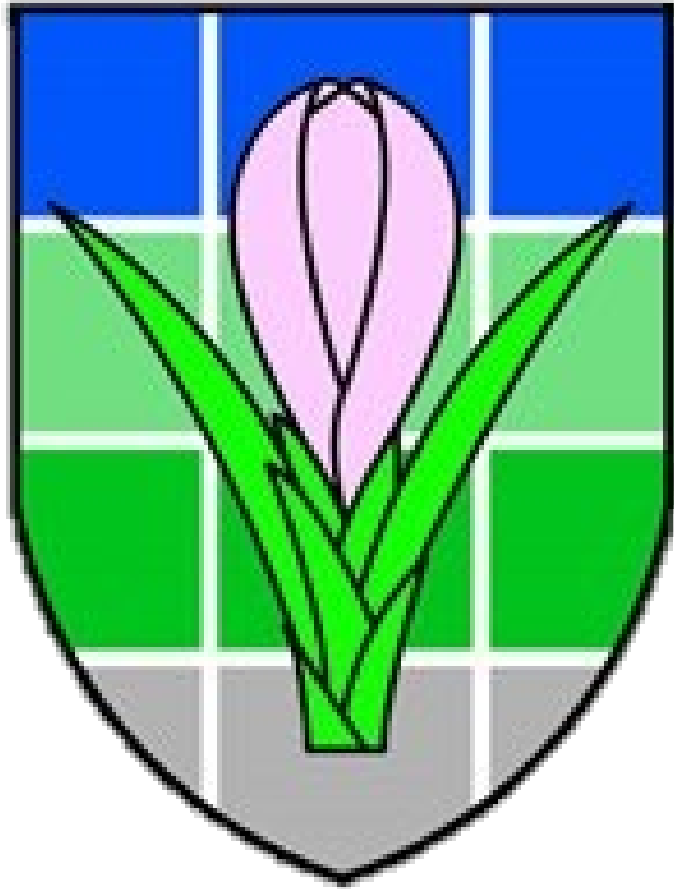
Switch Groups

- If you want to discuss matters pertaining to subjects, please contact your child's teacher in that subject or the Area Coordinator.
- If you want to discuss matters pertaining to pastoral support or guidance, please contact your child's form tutor in the first instance.
- If you have a safeguarding concern, please contact a member of the safeguarding team.



Saffron Walden Mummies

Saffron Walden Residents



Thank you!

Please email any questions to relevant staff: form tutor, subject teachers, Area Coordinators or the year office...

Saffron Walden
County High
School's annual
fundraising event
for parents, carers,
family and friends



Friday 28th June 2024

SWCHS Summer Party



SWCMS Summer Party 2024

An evening event, in a pretty marquee, on the school grounds - Live music from our talented students and bands - Dancing/disco

Open to all parents and carers, friends, family and staff - Bring your own food or order from Food Trucks - Purchase fizz, wine, beer from the bar (supplied by local award-winning brewery Wylde Sky and Adnams)

Raffle prizes and Silent Auction, kindly donated by parents, staff and local businesses - ALL THIS WHILST RAISING MONEY FOR YOUR SCHOOL!

**Thank you for supporting our school fundraising event,
SWCHS Summer Party 2024**

Whether it's purchasing a ticket, offering a raffle prize or helping set up on the day, we really appreciate it.

With the increasing costs of school supplies, food, resources and energy costs, we need to reach out to our school's community for some extra support.

We are very grateful for your contribution and continued support for our school and students, we really do have a fantastic community.

Further details for this event will be sent out in the new year.

Thank you

Tutor time

- S2 – 11SWM
- S3/4– 11CXS
- D3 – 11MEK
- D4 – 11LXK
- D5 – 11BCG
- D6 – 11GRM
- D7 – 11CL
- D9 – 11ARO
- D10 – 11KMM
- D11 - 11CJH

